

Manufacturer/Supplier:

WUXI DONGLIN SCI&TECH DEVELOPMENT CO., LTD

Address: A1-203 Mingpin CityII, No.8 Xihudong Road, Liangxi District
Wuxi Jiangsu Province, China

TELE: 86-510-82732223

FAX: 86-510-82720101-8014

Web : www.dldevelop.com

Email: info@dldevelop.com.cn service@dldevelop.com.cn

Product name: Rabbit anti-SHIP2 Antibody

Catalog: DL93033A

Synonyms: SHIP2; Phosphatidylinositol 3,4,5-trisphosphate
5-phosphatase 2; Inositol polyphosphate
phosphatase-like protein 1; INPPL-1; Protein 51C;
SH2 domain-containing inositol 5'-phosphatase 2;
SH2 domain-containing inositol phosphatase 2;
SHIP-2

Immunogen: KLH-conjugated synthetic peptide encompassing a
sequence within the center region of human SHIP2.
The exact sequence is proprietary.

Form: Liquid

Concentration: 1mg/mL

Size: 100 ul/50 ul

Host: Rabbit

Reactivity:

Human, Mouse, Rat, Pig

Application: WB**Clonality:** Polyclonal**Dilution:** WB (1/500 - 1/1000)

Entrez Gene: 3636/16332/65038

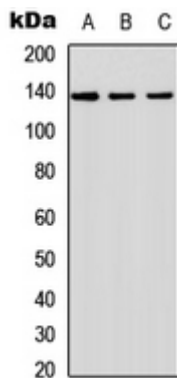
SwissProt: O15357/Q6P549/Q9WVR3

Purification: The antibody was purified by immunogen affinity chromatography.

Buffer: Liquid in 0.42% Potassium phosphate, 0.87% Sodium chloride, pH 7.3, 30% glycerol, and 0.01% sodium azide.

WB description:

Western blot analysis of SHIP2 expression in A549 (A), NS-1 (B), PC12 (C) whole cell lysates.



Storage:

Store at -20°C. Avoid repeated freeze / thaw cycles.