

**Manufacturer/Supplier:**

WUXI DONGLIN SCI&TECH DEVELOPMENT CO., LTD

**Address:** A1-203 Mingpin CityII, No.8 Xihudong Road, Liangxi District  
Wuxi Jiangsu Province, China

TELE: 86-510-82732223

FAX: 86-510-82720101-8014

**Web :** [www.dldevelop.com](http://www.dldevelop.com)

Email: [info@dldevelop.com.cn](mailto:info@dldevelop.com.cn) [service@dldevelop.com.cn](mailto:service@dldevelop.com.cn)

**Product name:** Rabbit anti-Histone H3 (AcK23) Antibody

**Catalog:** DL93000A

**Synonyms:** HIST1H3A; H3FA; HIST1H3B; H3FL;  
HIST1H3C; H3FC; HIST1H3D; H3FB;  
HIST1H3E; H3FD; HIST1H3F; H3FI; HIST1H3G;  
H3FH; HIST1H3H; H3FK; HIST1H3I; H3FF;  
HIST1H3J; H3FJ; Histone H3.1; Histone H3/a;  
Histone H3/b; Histone H3/c; Histone H3/d; Histone  
H3/f; Histone H3/

**Immunogen:** KLH-conjugated synthetic peptide encompassing a sequence within the N-term region of human Histone H3 (AcK23). The exact sequence is proprietary.

**Form:** Liquid

**Concentration:** 1mg/mL

**Size:** 100 ul/50 ul

**Host:** Rabbit

**Reactivity:**

Human, Mouse, Rat, Bovine, Chicken, Pig, Rabbit, Zebrafish

**Application:** WB, IF/IC

**Clonality:** Polyclonal

**Dilution:** WB (1/500 - 1/1000),  
IF/IC (1/100 - 1/500)

**Entrez Gene:** 319152; 15077; 15078/291159; 100361558

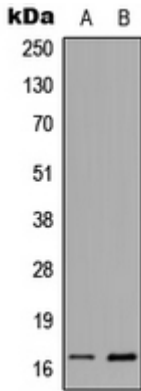
**SwissProt:** P68431; Q71DI3; P84243/P68433; P84228;  
P84244/Q6LED0; P84245

**Purification:** The antibody was purified by immunogen affinity chromatography.

**Buffer:** Liquid in 0.42% Potassium phosphate, 0.87% Sodium chloride, pH 7.3, 30% glycerol, and 0.01% sodium azide.

**WB description:**

Western blot analysis of Histone H3 (AcK23) expression in human breast cancer (A), NIH3T3 TSA-treated (B) whole cell lysates.



### IF/ICC description:

Immunofluorescent analysis of Histone H3 (AcK23) staining in HeLa cells. Formalin-fixed cells were permeabilized with 0.1% Triton X-100 in TBS for 5-10 minutes and blocked with 3% BSA-PBS for 30 minutes at room temperature. Cells were probed with the prim



### Storage:



Store at -20°C. Avoid repeated freeze / thaw cycles.