

**Manufacturer/Supplier:**

WUXI DONGLIN SCI&TECH DEVELOPMENT CO., LTD

**Address:** A1-203 Mingpin CityII, No.8 Xihudong Road, Liangxi District  
Wuxi Jiangsu Province, China

**TELE:** 86-510-82732223

**FAX:** 86-510-82720101-8014

**Web :** [www.dldevelop.com](http://www.dldevelop.com)

**Email:** [info@dldevelop.com.cn](mailto:info@dldevelop.com.cn)    [service@dldevelop.com.cn](mailto:service@dldevelop.com.cn)

**Product name:** Rabbit anti-GATA1 (pS310) Antibody

**Catalog:** DL92955A

**Synonyms:** ERYF1; GF1; Erythroid transcription factor; Eryf1;  
GATA-binding factor 1; GATA-1; GF-1; NF-E1  
DNA-binding protein

**Immunogen:** KLH-conjugated synthetic peptide encompassing a  
sequence within the C-term region of human  
GATA1 (pS310). The exact sequence is proprietary.

**Form:** Liquid

**Concentration:** 1mg/mL

**Size:** 100 ul/50 ul

**Host:** Rabbit

**Reactivity:**  
Human, Mouse, Rat, Monkey, Pig, S

**Application:** WB, IF/IC

heep

**Clonality:** Polyclonal

**Dilution:** WB (1/500 - 1/1000),  
IF/IC (1/100 - 1/500)

**Entrez Gene:** 2623/14460/100911167; 25172

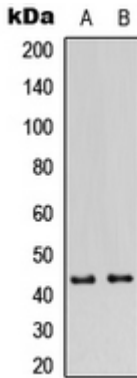
**SwissProt:** P15976/P17679/P43429

**Purification:** The antibody was purified by immunogen affinity chromatography.

**Buffer:** Liquid in 0.42% Potassium phosphate, 0.87% Sodium chloride, pH 7.3, 30% glycerol, and 0.01% sodium azide.

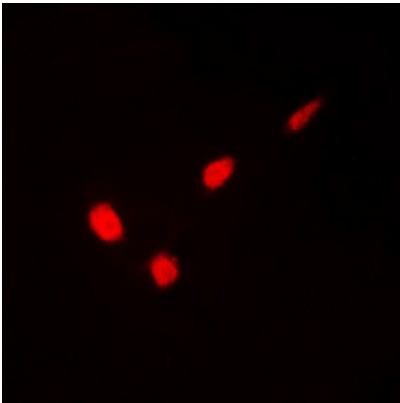
**WB description:**

Western blot analysis of GATA1 (pS310) expression in HeLa (A), HEK293T (B) whole cell lysates.



### IF/ICC description:

Immunofluorescent analysis of GATA1 (pS310) staining in MCF7 cells. Formalin-fixed cells were permeabilized with 0.1% Triton X-100 in TBS for 5-10 minutes and blocked with 3% BSA-PBS for 30 minutes at room temperature. Cells were probed with the primary a



### Storage:



Store at -20°C. Avoid repeated freeze / thaw cycles.