

Manufacturer/Supplier:

WUXI DONGLIN SCI&TECH DEVELOPMENT CO., LTD

Address: A1-203 Mingpin CityII, No.8 Xihudong Road, Liangxi District
Wuxi Jiangsu Province, China

TELE: 86-510-82732223

FAX: 86-510-82720101-8014

Web : www.dldevelop.com

Email: info@dldevelop.com.cn service@dldevelop.com.cn

Product name: Rabbit anti-Estrogen Receptor alpha (pS106)
Antibody

Catalog: DL92929A

Synonyms: ESR; NR3A1; Estrogen receptor; ER; ER-alpha;
Estradiol receptor; Nuclear receptor subfamily 3
group A member 1

Immunogen: KLH-conjugated synthetic peptide encompassing a
sequence within the center region of human
Estrogen Receptor alpha (pS106). The exact
sequence is proprietary.

Form: Liquid

Concentration: 1mg/mL

Size: 100 ul/50 ul

Host: Rabbit

Reactivity:

Human, Mouse, Rat, Monkey, Rabbit

Application: WB, IHC, IF/IC**Clonality:** Polyclonal

Dilution: WB (1/500 - 1/1000),
IHC (1/100 - 1/200), IF/IC (1/100 -
1/500)

Entrez Gene: 2099/13982/24890

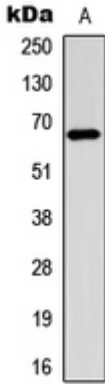
SwissProt: P03372/P19785/P06211

Purification: The antibody was purified by immunogen affinity chromatography.

Buffer: Liquid in 0.42% Potassium phosphate, 0.87% Sodium chloride, pH 7.3, 30% glycerol, and 0.01% sodium azide.

WB description:

Western blot analysis of Estrogen Receptor alpha (pS106) expression in MCF7 EGF-treated (A) whole cell lysates.

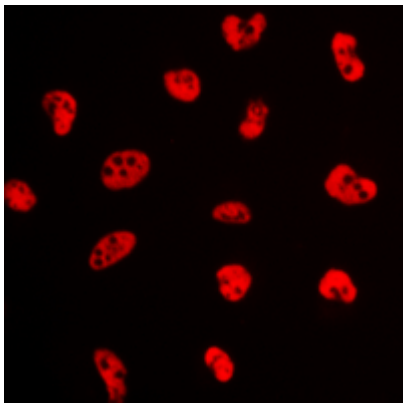


IHC description:

Immunohistochemical analysis of Estrogen Receptor alpha (pS106) staining in human breast cancer formalin fixed paraffin embedded tissue section. The section was pre-treated using heat mediated antigen retrieval with sodium citrate buffer (pH 6.0). The section was then incubated with the antibody at room temperature and detected using an HRP conjugated compact polymer system. DAB was used as the chromogen. The section was then counterstained with haematoxylin and mounted with DPX.

IF/ICC description:

Immunofluorescent analysis of Estrogen Receptor alpha (pS106) staining in MCF7 cells. Formalin-fixed cells were permeabilized with 0.1% Triton X-100 in TBS for 5-10 minutes and blocked with 3% BSA-PBS for 30 minutes at room temperature. Cells were probed



Storage:

Store at -20°C. Avoid repeated freeze / thaw cycles.