

**Manufacturer/Supplier:**

WUXI DONGLIN SCI&TECH DEVELOPMENT CO., LTD

**Address:** A1-203 Mingpin CityII, No.8 Xihudong Road, Liangxi District  
Wuxi Jiangsu Province, China

**TELE:** 86-510-82732223

**FAX:** 86-510-82720101-8014

**Web :** [www.dldevelop.com](http://www.dldevelop.com)

**Email:** [info@dldevelop.com.cn](mailto:info@dldevelop.com.cn)    [service@dldevelop.com.cn](mailto:service@dldevelop.com.cn)

**Product name:** Rabbit anti-ERCC6 Antibody

**Catalog:** DL92927A

**Synonyms:** CSB; DNA excision repair protein ERCC-6;  
ATP-dependent helicase ERCC6; Cockayne  
syndrome protein CSB

**Immunogen:** KLH-conjugated synthetic peptide encompassing a  
sequence within the N-term region of human  
ERCC6. The exact sequence is proprietary.

**Form:** Liquid

**Concentration:** 1mg/mL

**Size:** 100 ul/50 ul

**Host:** Rabbit

**Reactivity:** Human, Mouse, Rat

**Application:** WB, IHC

**Clonality:** Polyclonal

**Dilution:** WB (1/500 - 1/1000),  
IHC (1/100 - 1/200)

**Entrez Gene:** 2074

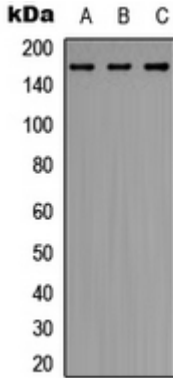
**SwissProt:** Q03468

**Purification:** The antibody was purified by immunogen affinity chromatography.

**Buffer:** Liquid in 0.42% Potassium phosphate, 0.87% Sodium chloride, pH 7.3, 30% glycerol, and 0.01% sodium azide.

**WB description:**

Western blot analysis of ERCC6 expression in HeLa (A), Raw264.7 (B), H9C2 (C) whole cell lysates.



### IHC description:

Immunohistochemical analysis of ERCC6 staining in human lung cancer formalin fixed paraffin embedded tissue section. The section was pre-treated using heat mediated antigen retrieval with sodium citrate buffer (pH 6.0). The section was then incubated with the antibody at room temperature and detected using an HRP conjugated compact polymer system. DAB was used as the chromogen. The section was then counterstained with haematoxylin and mounted with DPX.

### Storage:

Store at -20°C. Avoid repeated freeze / thaw cycles.