

Manufacturer/Supplier:

WUXI DONGLIN SCI&TECH DEVELOPMENT CO., LTD

Address: A1-203 Mingpin CityII, No.8 Xihudong Road, Liangxi District
Wuxi Jiangsu Province, China

TELE: 86-510-82732223

FAX: 86-510-82720101-8014

Web : www.dldevelop.com

Email: info@dldevelop.com.cn service@dldevelop.com.cn

Product name: Rabbit anti-COX7A2/3 Antibody

Catalog: DL92869A

Synonyms: COX7A2P2; COX7A3; COX7AL2; COX7AP2;
Putative cytochrome c oxidase subunit 7A3,
mitochondrial; Cytochrome c oxidase subunit VIIa
3; COX7A2; COX7AL; Cytochrome c oxidase
subunit 7A2, mitochondrial; Cytochrome c oxidase
subunit VIIa-liver/heart; Cytochrome c

Immunogen: KLH-conjugated synthetic peptide encompassing a
sequence within the N-term region of human
COX7A2/3. The exact sequence is proprietary.

Form: Liquid

Concentration: 1mg/mL

Size: 100 ul/50 ul

Host: Rabbit

Reactivity:

Human, Mouse, Rat, Bovine, Dog, Monkey, Sheep

Application: WB, IHC**Clonality:** Polyclonal

Dilution: WB (1/500 - 1/1000),
IHC (1/100 - 1/200)

Entrez Gene: 12866/29507

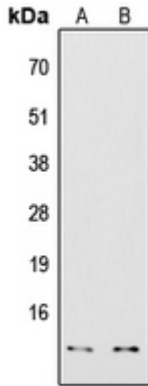
SwissProt: O60397; P14406/P48771/P35171

Purification: The antibody was purified by immunogen affinity chromatography.

Buffer: Liquid in 0.42% Potassium phosphate, 0.87% Sodium chloride, pH 7.3, 30% glycerol, and 0.01% sodium azide.

WB description:

Western blot analysis of COX7A2/3 expression in HepG2 (A), Jurkat (B) whole cell lysates.



IHC description:

Immunohistochemical analysis of COX7A2/3 staining in human heart formalin fixed paraffin embedded tissue section. The section was pre-treated using heat mediated antigen retrieval with sodium citrate buffer (pH 6.0). The section was then incubated with the antibody at room temperature and detected using an HRP conjugated compact polymer system. DAB was used as the chromogen. The section was then counterstained with haematoxylin and mounted with DPX.

Storage:

Store at -20°C. Avoid repeated freeze / thaw cycles.