

Manufacturer/Supplier:

WUXI DONGLIN SCI&TECH DEVELOPMENT CO., LTD

Address: A1-203 Mingpin CityII, No.8 Xihudong Road, Liangxi District
Wuxi Jiangsu Province, China

TELE: 86-510-82732223

FAX: 86-510-82720101-8014

Web : www.dldevelop.com

Email: info@dldevelop.com.cn service@dldevelop.com.cn

Product name: Rabbit anti-p21 (pT145) Antibody

Catalog: DL92841A

Synonyms: CAP20; CDKN1; CIP1; MDA6; PIC1; SDI1;
WAF1; Cyclin-dependent kinase inhibitor 1;
CDK-interacting protein 1; Melanoma
differentiation-associated protein 6; MDA-6; p21

Immunogen: KLH-conjugated synthetic peptide encompassing a
sequence within the C-term region of human p21
(pT145). The exact sequence is proprietary.

Form: Liquid

Concentration: 1mg/mL

Size: 100 ul/50 ul

Host: Rabbit

Reactivity:

Application: WB, IHC, IF/IC

Human,Bovine,Dog,Sheep

Clonality: Polyclonal

Dilution: WB (1/500 - 1/1000),
IHC (1/100 - 1/200), IF/IC (1/100 -
1/500)

Entrez Gene: 1026

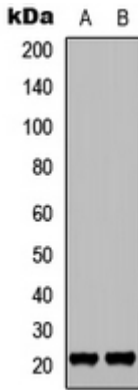
SwissProt: P38936

Purification: The antibody was purified by immunogen affinity chromatography.

Buffer: Liquid in 0.42% Potassium phosphate, 0.87% Sodium chloride, pH 7.3, 30% glycerol, and 0.01% sodium azide.

WB description:

Western blot analysis of p21 (pT145) expression in HT1080 EGF-treated (A), HeLa EGF-treated (B) whole cell lysates.

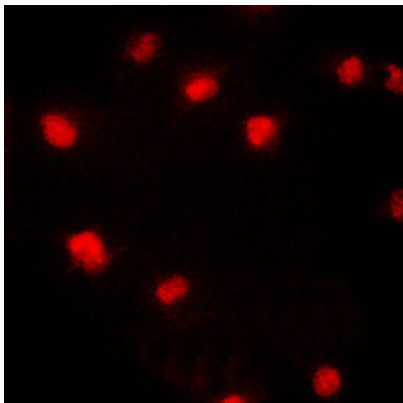


IHC description:

Immunohistochemical analysis of p21 (pT145) staining in human prostate cancer formalin fixed paraffin embedded tissue section. The section was pre-treated using heat mediated antigen retrieval with sodium citrate buffer (pH 6.0). The section was then incubated with the antibody at room temperature and detected using an HRP conjugated compact polymer system. DAB was used as the chromogen. The section was then counterstained with haematoxylin and mounted with DPX.

IF/ICC description:

Immunofluorescent analysis of p21 (pT145) staining in HeLa cells. Formalin-fixed cells were permeabilized with 0.1% Triton X-100 in TBS for 5-10 minutes and blocked with 3% BSA-PBS for 30 minutes at room temperature. Cells were probed with the primary ant



Storage:

Store at -20°C. Avoid repeated freeze / thaw cycles.