

Manufacturer/Supplier:

WUXI DONGLIN SCI&TECH DEVELOPMENT CO., LTD

Address: A1-203 Mingpin CityII, No.8 Xihudong Road, Liangxi District
Wuxi Jiangsu Province, China

TELE: 86-510-82732223

FAX: 86-510-82720101-8014

Web : www.dldevelop.com

Email: info@dldevelop.com.cn service@dldevelop.com.cn

Product name: Rabbit anti-CaMK2 alpha/delta (pT286) Antibody

Catalog: DL92812A

Synonyms: CAMK2A; CAMKA; KIAA0968;
Calcium/calmodulin-dependent protein kinase type
II subunit alpha; CaM kinase II subunit alpha;
CaMK-II subunit alpha; CAMK2D; CAMKD;
Calcium/calmodulin-dependent protein kinase type
II subunit delta; CaM kinase II subunit delta;

Immunogen: KLH-conjugated synthetic peptide encompassing a
sequence within the center region of human CaMK2
alpha/delta (pT286). The exact sequence is
proprietary.

Form: Liquid

Concentration: 1mg/mL

Size: 100 ul/50 ul

Host: Rabbit

Reactivity:

Human, Mouse, Rat, Bovine, Chicken, Monkey, Pig, Rabbit

Application: WB, IHC, IF/IC

Clonality: Polyclonal

Dilution: WB (1/500 - 1/1000),
IHC (1/100 - 1/200), IF/IC (1/100 - 1/500)

Entrez Gene: 12322; 108058/25400; 24246

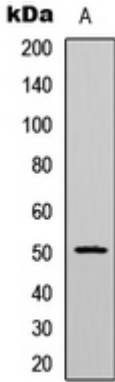
SwissProt: Q9UQM7; Q13557/P11798; Q6PHZ2/P11275; P15791

Purification: The antibody was purified by immunogen affinity chromatography.

Buffer: Liquid in 0.42% Potassium phosphate, 0.87% Sodium chloride, pH 7.3, 30% glycerol, and 0.01% sodium azide.

WB description:

Western blot analysis of CaMK2 alpha/delta (pT286) expression in HeLa (A) whole cell lysates.

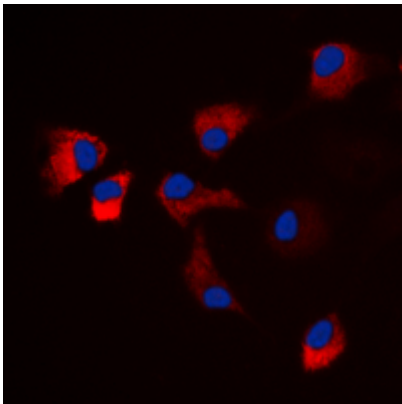


IHC description:

Immunohistochemical analysis of CaMK2 alpha/delta (pT286) staining in human brain formalin fixed paraffin embedded tissue section. The section was pre-treated using heat mediated antigen retrieval with sodium citrate buffer (pH 6.0). The section was then incubated with the antibody at room temperature and detected using an HRP conjugated compact polymer system. DAB was used as the chromogen. The section was then counterstained with haematoxylin and mounted with DPX.

IF/ICC description:

Immunofluorescent analysis of CaMK2 alpha/delta (pT286) staining in HeLa cells. Formalin-fixed cells were permeabilized with 0.1% Triton X-100 in TBS for 5-10 minutes and blocked with 3% BSA-PBS for 30 minutes at room temperature. Cells were probed with t



Storage:

Store at -20°C. Avoid repeated freeze / thaw cycles.