

**Manufacturer/Supplier:**

WUXI DONGLIN SCI&TECH DEVELOPMENT CO., LTD

**Address:** A1-203 Mingpin CityII, No.8 Xihudong Road, Liangxi District  
Wuxi Jiangsu Province, China

TELE: 86-510-82732223

FAX: 86-510-82720101-8014

**Web :** [www.dldevelop.com](http://www.dldevelop.com)

Email: [info@dldevelop.com.cn](mailto:info@dldevelop.com.cn)    [service@dldevelop.com.cn](mailto:service@dldevelop.com.cn)

**Product name:** Rabbit anti-B4GALT2 Antibody

**Catalog:** DL92791A

**Synonyms:** Beta-1,4-galactosyltransferase 2; Beta-1,4-GalTase  
2; Beta4Gal-T2; b4Gal-T2; UDP-Gal:beta-GlcNAc  
beta-1,4-galactosyltransferase 2;  
UDP-galactose:beta-N-acetylglucosamine  
beta-1,4-galactosyltransferase 2

**Immunogen:** KLH-conjugated synthetic peptide encompassing a  
sequence within the C-term region of human  
B4GALT2. The exact sequence is proprietary.

**Form:** Liquid

**Concentration:** 1mg/mL

**Size:** 100 ul/50 ul

**Host:** Rabbit

**Reactivity:**

Human, Mouse, Rat, Bovine

**Application:** WB, IHC**Clonality:** Polyclonal

**Dilution:** WB (1/500 - 1/1000),  
IHC (1/100 - 1/200)

**Entrez Gene:** 8704/53418

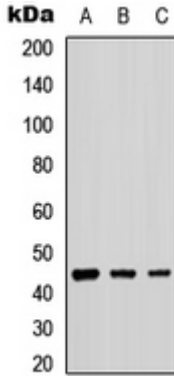
**SwissProt:** O60909/Q9Z2Y2

**Purification:** The antibody was purified by immunogen affinity chromatography.

**Buffer:** Liquid in 0.42% Potassium phosphate, 0.87% Sodium chloride, pH 7.3, 30% glycerol, and 0.01% sodium azide.

**WB description:**

Western blot analysis of B4GALT2 expression in A549 (A), NS-1 (B), PC12 (C) whole cell lysates.



### IHC description:

Immunohistochemical analysis of B4GALT2 staining in human colon cancer formalin fixed paraffin embedded tissue section. The section was pre-treated using heat mediated antigen retrieval with sodium citrate buffer (pH 6.0). The section was then incubated with the antibody at room temperature and detected using an HRP conjugated compact polymer system. DAB was used as the chromogen. The section was then counterstained with haematoxylin and mounted with DPX.

### Storage:

Store at -20°C. Avoid repeated freeze / thaw cycles.