

Manufacturer/Supplier:

WUXI DONGLIN SCI&TECH DEVELOPMENT CO., LTD

Address: A1-203 Mingpin CityII, No.8 Xihudong Road, Liangxi District
Wuxi Jiangsu Province, China

TELE: 86-510-82732223

FAX: 86-510-82720101-8014

Web : www.dldevelop.com

Email: info@dldevelop.com.cn service@dldevelop.com.cn

Product name: Rabbit anti-ANO1 Antibody

Catalog: DL92768A

Synonyms: DOG1; ORAOV2; TAOS2; TMEM16A;
Anoctamin-1; Discovered on gastrointestinal
stromal tumors protein 1; Oral cancer overexpressed
protein 2; Transmembrane protein 16A;
Tumor-amplified and overexpressed sequence 2

Immunogen: KLH-conjugated synthetic peptide encompassing a
sequence within the C-term region of human ANO1.
The exact sequence is proprietary.

Form: Liquid

Concentration: 1mg/mL

Size: 100 ul/50 ul

Host: Rabbit

Reactivity: Human,Rat,Monkey **Application:** WB

Clonality: Polyclonal **Dilution:** WB (1/500 - 1/1000)

Entrez Gene: 55107/101772

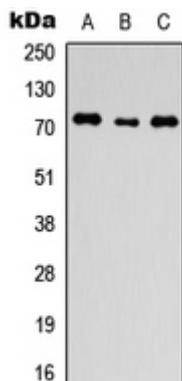
SwissProt: Q5XXA6/Q8BHY3

Purification: The antibody was purified by immunogen affinity chromatography.

Buffer: Liquid in 0.42% Potassium phosphate, 0.87% Sodium chloride, pH 7.3, 30% glycerol, and 0.01% sodium azide.

WB description:

Western blot analysis of ANO1 expression in HEK293T (A), H9C2 (B), HeLa (C) whole cell lysates.



Storage:

Store at -20°C. Avoid repeated freeze / thaw cycles.