

Manufacturer/Supplier:

WUXI DONGLIN SCI&TECH DEVELOPMENT CO., LTD

Address: A1-203 Mingpin CityII, No.8 Xihudong Road, Liangxi District
Wuxi Jiangsu Province, China

TELE: 86-510-82732223

FAX: 86-510-82720101-8014

Web : www.dldevelop.com

Email: info@dldevelop.com.cn service@dldevelop.com.cn

Product name: Rabbit anti-Alpha-2A Adrenergic Receptor
Antibody

Catalog: DL92757A

Synonyms: ADRA2R; ADRAR; Alpha-2A adrenergic receptor;
Alpha-2 adrenergic receptor subtype C10; Alpha-2A
adrenoreceptor; Alpha-2A adrenoceptor;
Alpha-2AAR

Immunogen: KLH-conjugated synthetic peptide encompassing a
sequence within the center region of human
Alpha-2A Adrenergic Receptor. The exact sequence
is proprietary.

Form: Liquid

Concentration: 1mg/mL

Size: 100 ul/50 ul

Host: Rabbit

Reactivity: Human

Application: WB, IF/IC, IP

Clonality: Polyclonal

Dilution: WB (1/500 - 1/1000),
IF/IC (1/100 - 1/500), IP (1/10 -
1/100)

Entrez Gene: 150

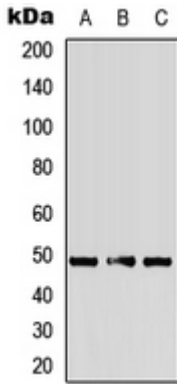
SwissProt: P08913

Purification: The antibody was purified by immunogen affinity chromatography.

Buffer: Liquid in 0.42% Potassium phosphate, 0.87% Sodium chloride, pH 7.3, 30% glycerol, and 0.01% sodium azide.

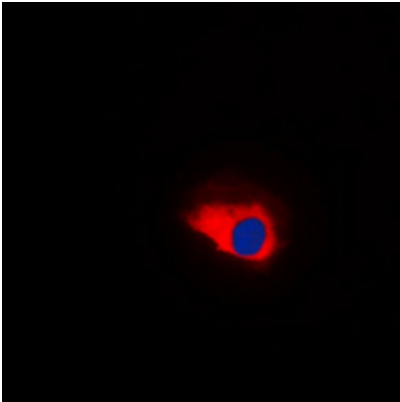
WB description:

Western blot analysis of Alpha-2A Adrenergic Receptor expression in HepG2 (A), mouse heart (B), rat heart (C) whole cell lysates.



IF/ICC description:

Immunofluorescent analysis of Alpha-2A Adrenergic Receptor staining in HepG2 cells. Formalin-fixed cells were permeabilized with 0.1% Triton X-100 in TBS for 5-10 minutes and blocked with 3% BSA-PBS for 30 minutes at room temperature. Cells were probed wi



IP description:

Storage:

Store at -20°C. Avoid repeated freeze / thaw cycles.