

Manufacturer/Supplier:

WUXI DONGLIN SCI&TECH DEVELOPMENT CO., LTD

Address: A1-203 Mingpin CityII, No.8 Xihudong Road, Liangxi District
Wuxi Jiangsu Province, China

TELE: 86-510-82732223

FAX: 86-510-82720101-8014

Web : www.dldevelop.com

Email: info@dldevelop.com.cn service@dldevelop.com.cn

Product name: Rabbit anti-PDP1 Antibody

Catalog: DL92692A

Synonyms: PDP; PPM2C; [Pyruvate dehydrogenase
[acetyl-transferring]]-phosphatase 1, mitochondrial;
PDP 1; Protein phosphatase 2C; Pyruvate
dehydrogenase phosphatase catalytic subunit 1;
PDPC 1

Immunogen: KLH-conjugated synthetic peptide encompassing a
sequence within the center region of human PDP1.
The exact sequence is proprietary.

Form: Liquid

Concentration: 1mg/mL

Size: 100 ul/50 ul

Host: Rabbit

Reactivity:

Human, Mouse, Bovine

Application: WB**Clonality:** Polyclonal**Dilution:** WB (1/500 - 1/1000)

Entrez Gene: 54704/381511

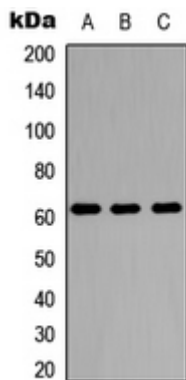
SwissProt: Q9P0J1/Q3UV70

Purification: The antibody was purified by immunogen affinity chromatography.

Buffer: Liquid in 0.42% Potassium phosphate, 0.87% Sodium chloride, pH 7.3, 30% glycerol, and 0.01% sodium azide.

WB description:

Western blot analysis of PDP1 expression in A549 (A), NS-1 (B), MCF7 (C) whole cell lysates.



Storage:

Store at -20°C. Avoid repeated freeze / thaw cycles.