

**Manufacturer/Supplier:**

WUXI DONGLIN SCI&TECH DEVELOPMENT CO., LTD

**Address:** A1-203 Mingpin CityII, No.8 Xihudong Road, Liangxi District  
Wuxi Jiangsu Province, China

**TELE:** 86-510-82732223

**FAX:** 86-510-82720101-8014

**Web :** [www.dldevelop.com](http://www.dldevelop.com)

**Email:** [info@dldevelop.com.cn](mailto:info@dldevelop.com.cn)    [service@dldevelop.com.cn](mailto:service@dldevelop.com.cn)

**Product name:** Rabbit anti-NBPF4/6 Antibody

**Catalog:** DL92673A

**Synonyms:** Neuroblastoma breakpoint family member 4;  
Neuroblastoma breakpoint family member 6

**Immunogen:** KLH-conjugated synthetic peptide encompassing a  
sequence within the center region of human  
NBPF4/6. The exact sequence is proprietary.

**Form:** Liquid

**Concentration:** 1mg/mL

**Size:** 100 ul/50 ul

**Host:** Rabbit

**Reactivity:** Human, Mouse, Rat

**Application:** WB

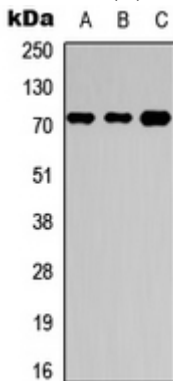
**Clonality:** Polyclonal

**Dilution:** WB (1/500 - 1/1000)

<b>Entrez Gene:</b>	653149
<b>SwissProt:</b>	Q96M43; Q5VWK0
<b>Purification:</b>	The antibody was purified by immunogen affinity chromatography.
<b>Buffer:</b>	Liquid in 0.42% Potassium phosphate, 0.87% Sodium chloride, pH 7.3, 30% glycerol, and 0.01% sodium azide.

### WB description:

Western blot analysis of NBPF4/6 expression in HEK293T (A), Raw264.7 (B), H9C2 (C) whole cell lysates.



### Storage:



Store at -20°C. Avoid repeated freeze / thaw cycles.