

Manufacturer/Supplier:

WUXI DONGLIN SCI&TECH DEVELOPMENT CO., LTD

Address: A1-203 Mingpin CityII, No.8 Xihudong Road, Liangxi District
Wuxi Jiangsu Province, China

TELE: 86-510-82732223

FAX: 86-510-82720101-8014

Web : www.dldevelop.com

Email: info@dldevelop.com.cn service@dldevelop.com.cn

Product name: Rabbit anti-Cytochrome P450 11B1/2 Antibody

Catalog: DL92474A

Synonyms: CYP11B1; S11BH; Cytochrome P450 11B1, mitochondrial; CYPXIB1; Cytochrome P-450c11; Cytochrome P450C11; Steroid 11-beta-hydroxylase; CYP11B2; Cytochrome P450 11B2, mitochondrial; Aldosterone synthase; ALDOS; Aldosterone-synthesizing enzyme; CYPXIB2; Cytoch

Immunogen: KLH-conjugated synthetic peptide encompassing a sequence within the N-term region of human Cytochrome P450 11B1/2. The exact sequence is proprietary.

Form: Liquid

Concentration: 1mg/mL

Size: 100 ul/50 ul

Host: Rabbit

Reactivity: Human

Application: WB, IP

Clonality: Polyclonal

Dilution: WB (1/500 - 1/1000), IP
(1/10 - 1/100)

Entrez Gene:

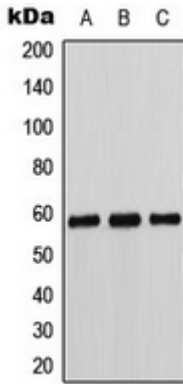
SwissProt: P15538; P19099

Purification: The antibody was purified by immunogen affinity chromatography.

Buffer: Liquid in 0.42% Potassium phosphate, 0.87% Sodium chloride, pH 7.3, 30% glycerol, and 0.01% sodium azide.

WB description:

Western blot analysis of Cytochrome P450 11B1/2 expression in K562 (A), Caki1 (B), MCF7 (C) whole cell lysates.



IP description:

Storage:

Store at -20°C. Avoid repeated freeze / thaw cycles.