

Manufacturer/Supplier:

WUXI DONGLIN SCI&TECH DEVELOPMENT CO., LTD

Address: A1-203 Mingpin CityII, No.8 Xihudong Road, Liangxi District
Wuxi Jiangsu Province, China

TELE: 86-510-82732223

FAX: 86-510-82720101-8014

Web : www.dldevelop.com

Email: info@dldevelop.com.cn service@dldevelop.com.cn

Product name: Rabbit anti-KLF1/5/7 Antibody

Catalog: DL92469A

Synonyms: KLF1; EKLF; Krueppel-like factor 1; Erythroid krueppel-like transcription factor; EKLF; KLF5; BTEB2; CKLF; IKLF; Krueppel-like factor 5; Basic transcription element-binding protein 2; BTE-binding protein 2; Colon krueppel-like factor; GC-box-binding prote

Immunogen: KLH-conjugated synthetic peptide encompassing a sequence within the C-term region of human KLF1/5/7. The exact sequence is proprietary.

Form: Liquid

Concentration: 1mg/mL

Size: 100 ul/50 ul

Host: Rabbit

Reactivity:

Human, Mouse, Rat, Zebrafish

Application: WB, IF/IC**Clonality:** Polyclonal

Dilution: WB (1/500 - 1/1000),
IF/IC (1/100 - 1/500)

Entrez Gene:

12224; 93691

SwissProt:

Q13351; Q13887; O75840/P46099; Q9Z0Z7;
Q99JB0

Purification:

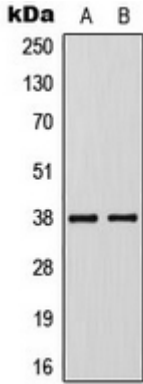
The antibody was purified by immunogen affinity chromatography.

Buffer:

Liquid in 0.42% Potassium phosphate, 0.87% Sodium chloride, pH 7.3, 30% glycerol, and 0.01% sodium azide.

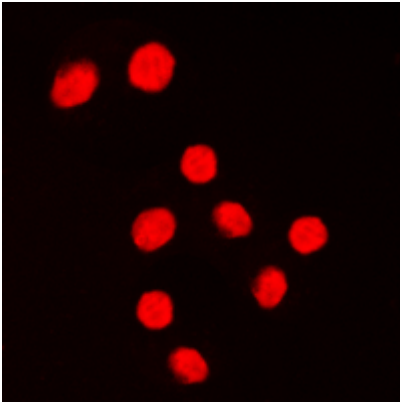
WB description:

Western blot analysis of KLF1/5/7 expression in Jurkat (A), VEC (B) whole cell lysates.



IF/ICC description:

Immunofluorescent analysis of KLF1/5/7 staining in Jurkat cells. Formalin-fixed cells were permeabilized with 0.1% Triton X-100 in TBS for 5-10 minutes and blocked with 3% BSA-PBS for 30 minutes at room temperature. Cells were probed with the primary anti



Storage:



Store at -20°C. Avoid repeated freeze / thaw cycles.