

Manufacturer/Supplier:

WUXI DONGLIN SCI&TECH DEVELOPMENT CO., LTD

Address: A1-203 Mingpin CityII, No.8 Xihudong Road, Liangxi District
Wuxi Jiangsu Province, China

TELE: 86-510-82732223

FAX: 86-510-82720101-8014

Web : www.dldevelop.com

Email: info@dldevelop.com.cn service@dldevelop.com.cn

Product name: Rabbit anti-ANKRD1 Antibody

Catalog: DL92404A

Synonyms: C193; CARP; HA1A2; Ankyrin repeat domain-containing protein 1; Cardiac ankyrin repeat protein; Cytokine-inducible gene C-193 protein; Cytokine-inducible nuclear protein

Immunogen: KLH-conjugated synthetic peptide encompassing a sequence within the C-term region of human ANKRD1. The exact sequence is proprietary.

Form: Liquid

Concentration: 1mg/mL

Size: 100 ul/50 ul

Host: Rabbit

Reactivity:

Application: WB, IHC

Human, Mouse, Rat, Bovine, Chicken, Pig, Rabbit

Clonality: Polyclonal

Dilution: WB (1/500 - 1/1000),
IHC (1/100 - 1/200)

Entrez Gene: 27063/107765/27064

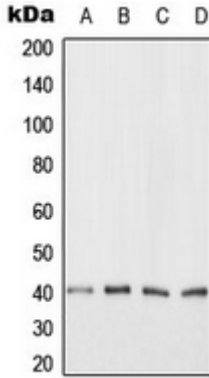
SwissProt: Q15327/Q9CR42/Q8R560

Purification: The antibody was purified by immunogen affinity chromatography.

Buffer: Liquid in 0.42% Potassium phosphate, 0.87% Sodium chloride, pH 7.3, 30% glycerol, and 0.01% sodium azide.

WB description:

Western blot analysis of ANKRD1 expression in HeLa (A), Jurkat (B), NIH3T3 (C), H9C2 (D) whole cell lysates.



IHC description:

Immunohistochemical analysis of ANKRD1 staining in human lymph node formalin fixed paraffin embedded tissue section. The section was pre-treated using heat mediated antigen retrieval with sodium citrate buffer (pH 6.0). The section was then incubated with the antibody at room temperature and detected using an HRP conjugated compact polymer system. DAB was used as the chromogen. The section was then counterstained with haematoxylin and mounted with DPX.

Storage:

Store at -20°C. Avoid repeated freeze / thaw cycles.