

**Manufacturer/Supplier:**

WUXI DONGLIN SCI&TECH DEVELOPMENT CO., LTD

**Address:** A1-203 Mingpin CityII, No.8 Xihudong Road, Liangxi District  
Wuxi Jiangsu Province, China

TELE: 86-510-82732223

FAX: 86-510-82720101-8014

**Web :** [www.dldevelop.com](http://www.dldevelop.com)

Email: [info@dldevelop.com.cn](mailto:info@dldevelop.com.cn)    [service@dldevelop.com.cn](mailto:service@dldevelop.com.cn)

**Product name:** Rabbit anti-Histone H4 (pS47) Antibody

**Catalog:** DL92343A

**Synonyms:** H4/A; H4FA; H4/I; H4FI; H4/G; H4FG; H4/B;  
H4FB; H4/J; H4FJ; H4/C; H4FC; H4/H; H4FH;  
H4/M; H4FM; H4/E; H4FE; H4/D; H4FD; H4/K;  
H4FK; H4/N; H4F2; H4FN; HIST2H4; H4/O;  
H4FO; Histone H4

**Immunogen:** KLH-conjugated synthetic peptide encompassing a sequence within the center region of human Histone H4 (pS47). The exact sequence is proprietary.

**Form:** Liquid

**Concentration:** 1mg/mL

**Size:** 100 ul/50 ul

**Host:** Rabbit

**Reactivity:** Human,Rat

**Application:** WB, IF/IC

**Clonality:** Polyclonal

**Dilution:** WB (1/500 - 1/1000),  
IF/IC (1/100 - 1/500)

**Entrez Gene:**

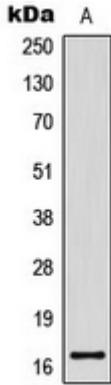
**SwissProt:** P62805

**Purification:** The antibody was purified by immunogen affinity chromatography.

**Buffer:** Liquid in 0.42% Potassium phosphate, 0.87% Sodium chloride, pH 7.3, 30% glycerol, and 0.01% sodium azide.

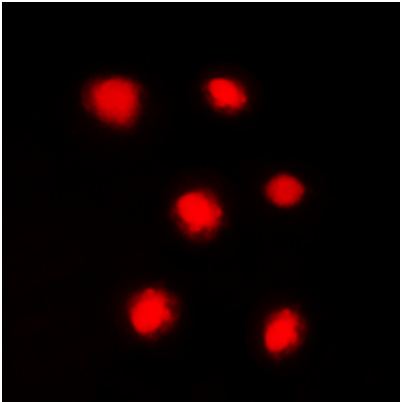
**WB description:**

Western blot analysis of Histone H4 (pS47) expression in HeLa (A) whole cell lysates.



### IF/ICC description:

Immunofluorescent analysis of Histone H4 (pS47) staining in HeLa cells. Formalin-fixed cells were permeabilized with 0.1% Triton X-100 in TBS for 5-10 minutes and blocked with 3% BSA-PBS for 30 minutes at room temperature. Cells were probed with the prima



### Storage:



Store at -20°C. Avoid repeated freeze / thaw cycles.