

Manufacturer/Supplier:

WUXI DONGLIN SCI&TECH DEVELOPMENT CO., LTD

Address: A1-203 Mingpin CityII, No.8 Xihudong Road, Liangxi District
Wuxi Jiangsu Province, China

TELE: 86-510-82732223

FAX: 86-510-82720101-8014

Web : www.dldevelop.com

Email: info@dldevelop.com.cn service@dldevelop.com.cn

Product name: Rabbit anti-STAT1 Antibody

Catalog: DL92322A

Synonyms: Signal transducer and activator of transcription
1-alpha/beta; Transcription factor ISGF-3
components p91/p84

Immunogen: KLH-conjugated synthetic peptide encompassing a
sequence within the C-term region of human
STAT1. The exact sequence is proprietary.

Form: Liquid

Concentration: 1mg/mL

Size: 100 ul/50 ul

Host: Rabbit

Reactivity:
Human, Mouse, Rat, Bovine, Chick

Application: WB, IHC, IP

n,Dog,Monkey,Pig

Clonality: Polyclonal

Dilution: WB (1/500 - 1/1000),
IHC (1/100 - 1/200), IP (1/10 -
1/100)

Entrez Gene: 6772

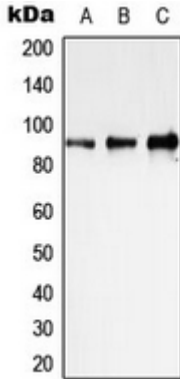
SwissProt: P42224/P42225

Purification: The antibody was purified by immunogen affinity chromatography.

Buffer: Liquid in 0.42% Potassium phosphate, 0.87% Sodium chloride, pH 7.3, 30% glycerol, and 0.01% sodium azide.

WB description:

Western blot analysis of STAT1 expression in HeLa (A), NIH3T3 (B), PC12 (C) whole cell lysates.



IHC description:

Immunohistochemical analysis of STAT1 staining in human lung cancer formalin fixed paraffin embedded tissue section. The section was pre-treated using heat mediated antigen retrieval with sodium citrate buffer (pH 6.0). The section was then incubated with the antibody at room temperature and detected using an HRP conjugated compact polymer system. DAB was used as the chromogen. The section was then counterstained with haematoxylin and mounted with DPX.

IP description:

Storage:

Store at -20°C. Avoid repeated freeze / thaw cycles.