

Manufacturer/Supplier:

WUXI DONGLIN SCI&TECH DEVELOPMENT CO., LTD

Address: A1-203 Mingpin CityII, No.8 Xihudong Road, Liangxi District
Wuxi Jiangsu Province, China

TELE: 86-510-82732223

FAX: 86-510-82720101-8014

Web : www.dldevelop.com

Email: info@dldevelop.com.cn service@dldevelop.com.cn

Product name: Rabbit anti-RPS6 (pS235) Antibody

Catalog: DL92312A

Synonyms: 40S ribosomal protein S6; Phosphoprotein NP33

Immunogen: KLH-conjugated synthetic peptide encompassing a sequence within the C-term region of human RPS6 (pS235). The exact sequence is proprietary.

Form: Liquid

Concentration: 1mg/mL

Size: 100 ul/50 ul

Host: Rabbit

Reactivity:
Human, Mouse, Rat, Bovine, Chick
en, Monkey, Sheep, Zebrafish

Application: WB, IF/IC

Clonality: Polyclonal

Dilution: WB (1/500 - 1/1000),
IF/IC (1/100 - 1/500)

Entrez Gene: 6194/20104/100911372; 29304

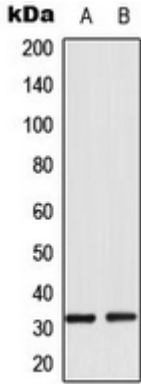
SwissProt: P62753/P62754/P62755

Purification: The antibody was purified by immunogen affinity chromatography.

Buffer: Liquid in 0.42% Potassium phosphate, 0.87% Sodium chloride, pH 7.3, 30% glycerol, and 0.01% sodium azide.

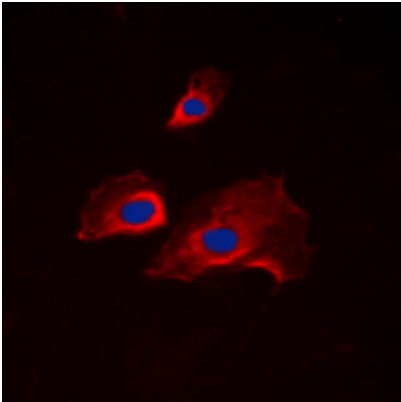
WB description:

Western blot analysis of RPS6 (pS235) expression in HeLa Calyculin A-treated (A), NIH3T3 (B) whole cell lysates.



IF/ICC description:

Immunofluorescent analysis of RPS6 (pS235) staining in NIH3T3 cells. Formalin-fixed cells were permeabilized with 0.1% Triton X-100 in TBS for 5-10 minutes and blocked with 3% BSA-PBS for 30 minutes at room temperature. Cells were probed with the primary



Storage:



Store at -20°C. Avoid repeated freeze / thaw cycles.