

Manufacturer/Supplier:

WUXI DONGLIN SCI&TECH DEVELOPMENT CO., LTD

Address: A1-203 Mingpin CityII, No.8 Xihudong Road, Liangxi District
Wuxi Jiangsu Province, China

TELE: 86-510-82732223

FAX: 86-510-82720101-8014

Web : www.dldevelop.com

Email: info@dldevelop.com.cn service@dldevelop.com.cn

Product name: Rabbit anti-NF-kappaB p105 (pS932) Antibody

Catalog: DL92282A

Synonyms: Nuclear factor NF-kappa-B p105 subunit;
DNA-binding factor KBF1; EBP-1; Nuclear factor
of kappa light polypeptide gene enhancer in B-cells
1

Immunogen: KLH-conjugated synthetic peptide encompassing a
sequence within the C-term region of human
NF-kappaB p105 (pS932). The exact sequence is
proprietary.

Form: Liquid

Concentration: 1mg/mL

Size: 100 ul/50 ul

Host: Rabbit

Reactivity:

Human, Mouse, Rat, Bovine, Chicken, Dog, Pig

Application: WB, IHC**Clonality:** Polyclonal

Dilution: WB (1/500 - 1/1000),
IHC (1/100 - 1/200)

Entrez Gene: 4790/18033

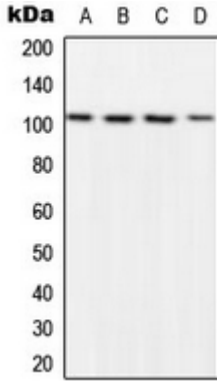
SwissProt: P19838/P25799/Q63369

Purification: The antibody was purified by immunogen affinity chromatography.

Buffer: Liquid in 0.42% Potassium phosphate, 0.87% Sodium chloride, pH 7.3, 30% glycerol, and 0.01% sodium azide.

WB description:

Western blot analysis of NF-kappaB p105 (pS932) expression in HeLa LPS-treated (A), NIH3T3 LPS-treated (B), Raw264.7 LPS-treated (C), rat kidney (D) whole cell lysates.



IHC description:

Immunohistochemical analysis of NF-kappaB p105 (pS932) staining in human breast cancer formalin fixed paraffin embedded tissue section. The section was pre-treated using heat mediated antigen retrieval with sodium citrate buffer (pH 6.0). The section was then incubated with the antibody at room temperature and detected using an HRP conjugated compact polymer system. DAB was used as the chromogen. The section was then counterstained with haematoxylin and mounted with DPX.

Storage:

Store at -20°C. Avoid repeated freeze / thaw cycles.