

Manufacturer/Supplier:

WUXI DONGLIN SCI&TECH DEVELOPMENT CO., LTD

Address: A1-203 Mingpin CityII, No.8 Xihudong Road, Liangxi District
Wuxi Jiangsu Province, China

TELE: 86-510-82732223

FAX: 86-510-82720101-8014

Web : www.dldevelop.com

Email: info@dldevelop.com.cn service@dldevelop.com.cn

Product name: Rabbit anti-Nibrin (pS343) Antibody

Catalog: DL92279A

Synonyms: NBS; NBS1; P95; Nibrin; Cell cycle regulatory protein p95; Nijmegen breakage syndrome protein 1

Immunogen: KLH-conjugated synthetic peptide encompassing a sequence within the center region of human Nibrin (pS343). The exact sequence is proprietary.

Form: Liquid

Concentration: 1mg/mL

Size: 100 ul/50 ul

Host: Rabbit

Reactivity: Human, Mouse, Rat

Application: WB

Clonality: Polyclonal

Dilution: WB (1/500 - 1/1000)

Entrez Gene: 4683/27354/85482

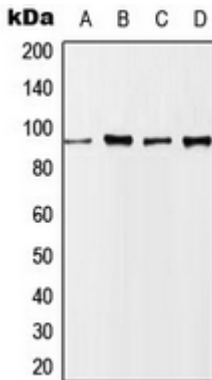
SwissProt: O60934/Q9R207/Q9JIL9

Purification: The antibody was purified by immunogen affinity chromatography.

Buffer: Liquid in 0.42% Potassium phosphate, 0.87% Sodium chloride, pH 7.3, 30% glycerol, and 0.01% sodium azide.

WB description:

Western blot analysis of Nibrin (pS343) expression in Jurkat (A), LO2 UV-treated (B), Raw264.7 UV-treated (C), PC12 (D) whole cell lysates.



Storage:

Store at -20°C. Avoid repeated freeze / thaw cycles.