

Manufacturer/Supplier:

WUXI DONGLIN SCI&TECH DEVELOPMENT CO., LTD

Address: A1-203 Mingpin CityII, No.8 Xihudong Road, Liangxi District
Wuxi Jiangsu Province, China

TELE: 86-510-82732223

FAX: 86-510-82720101-8014

Web : www.dldevelop.com

Email: info@dldevelop.com.cn service@dldevelop.com.cn

Product name: Rabbit anti-c-Met (pY1234) Antibody

Catalog: DL92269A

Synonyms: Hepatocyte growth factor receptor; HGF receptor;
HGF/SF receptor; Proto-oncogene c-Met; Scatter
factor receptor; SF receptor; Tyrosine-protein kinase
Met

Immunogen: KLH-conjugated synthetic peptide encompassing a
sequence within the C-term region of human c-Met
(pY1234). The exact sequence is proprietary.

Form: Liquid

Concentration: 1mg/mL

Size: 100 ul/50 ul

Host: Rabbit

Reactivity:

Application: WB, IP

Human, Mouse, Rat, Dog, Rabbit

Clonality: Polyclonal

Dilution: WB (1/500 - 1/1000), IP
(1/10 - 1/100)

Entrez Gene: 4233/24553

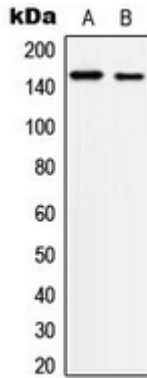
SwissProt: P08581/P16056/P97523

Purification: The antibody was purified by immunogen affinity chromatography.

Buffer: Liquid in 0.42% Potassium phosphate, 0.87% Sodium chloride, pH 7.3, 30% glycerol, and 0.01% sodium azide.

WB description:

Western blot analysis of c-Met (pY1234) expression in A431 (A), HepG2 (B) whole cell lysates.



IP description:

Storage:

Store at -20°C. Avoid repeated freeze / thaw cycles.