

**Manufacturer/Supplier:**

WUXI DONGLIN SCI&TECH DEVELOPMENT CO., LTD

**Address:** A1-203 Mingpin CityII, No.8 Xihudong Road, Liangxi District  
Wuxi Jiangsu Province, China

TELE: 86-510-82732223

FAX: 86-510-82720101-8014

**Web :** [www.dldevelop.com](http://www.dldevelop.com)

Email: [info@dldevelop.com.cn](mailto:info@dldevelop.com.cn)    [service@dldevelop.com.cn](mailto:service@dldevelop.com.cn)

**Product name:** Rabbit anti-FGFR1 Antibody

**Catalog:** DL92219A

**Synonyms:** BFGFR; CEK; FGFBR; FLG; FLT2; HBGFR;  
Fibroblast growth factor receptor 1; FGFR-1; Basic  
fibroblast growth factor receptor 1; BFGFR;  
bFGF-R-1; Fms-like tyrosine kinase 2; FLT-2;  
N-sam; Proto-oncogene c-Fgr; CD331

**Immunogen:** KLH-conjugated synthetic peptide encompassing a  
sequence within the C-term region of human  
FGFR1. The exact sequence is proprietary.

**Form:** Liquid

**Concentration:** 1mg/mL

**Size:** 100 ul/50 ul

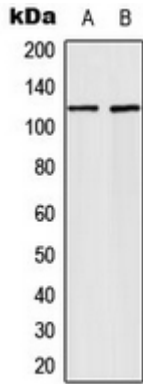
**Host:** Rabbit

**Reactivity:**

Human, Mouse, Rat, Chicken, Pig, Rabbit, Zebrafish

**Application:** WB**Clonality:** Polyclonal**Dilution:** WB (1/500 - 1/1000)**Entrez Gene:** 2260/14182/79114**SwissProt:** P11362/P16092/Q04589**Purification:** The antibody was purified by immunogen affinity chromatography.**Buffer:** Liquid in 0.42% Potassium phosphate, 0.87% Sodium chloride, pH 7.3, 30% glycerol, and 0.01% sodium azide.**WB description:**

Western blot analysis of FGFR1 expression in Saos2 (A), Raw264.7 (B) whole cell lysates.



**Storage:**

Store at -20°C. Avoid repeated freeze / thaw cycles.