

Manufacturer/Supplier:

WUXI DONGLIN SCI&TECH DEVELOPMENT CO., LTD

Address: A1-203 Mingpin CityII, No.8 Xihudong Road, Liangxi District
Wuxi Jiangsu Province, China

TELE: 86-510-82732223

FAX: 86-510-82720101-8014

Web : www.dldevelop.com

Email: info@dldevelop.com.cn service@dldevelop.com.cn

Product name: Rabbit anti-NET (pS357) Antibody

Catalog: DL92210A

Synonyms: NET; SAP2; ETS domain-containing protein Elk-3;
ETS-related protein ERP; ETS-related protein NET;
Serum response factor accessory protein 2; SAP-2;
SRF accessory protein 2

Immunogen: KLH-conjugated synthetic peptide encompassing a
sequence within the C-term region of human NET
(pS357). The exact sequence is proprietary.

Form: Liquid

Concentration: 1mg/mL

Size: 100 ul/50 ul

Host: Rabbit

Reactivity:

Application: WB, IF/IC, IP

Human, Mouse, Rat, Bovine, Zebrafish

Clonality: Polyclonal

Dilution: WB (1/500 - 1/1000),
IF/IC (1/100 - 1/500), IP (1/10 -
1/100)

Entrez Gene: 2004/13713

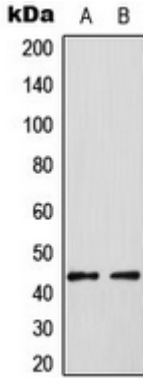
SwissProt: P41970/P41971

Purification: The antibody was purified by immunogen affinity chromatography.

Buffer: Liquid in 0.42% Potassium phosphate, 0.87% Sodium chloride, pH 7.3, 30% glycerol, and 0.01% sodium azide.

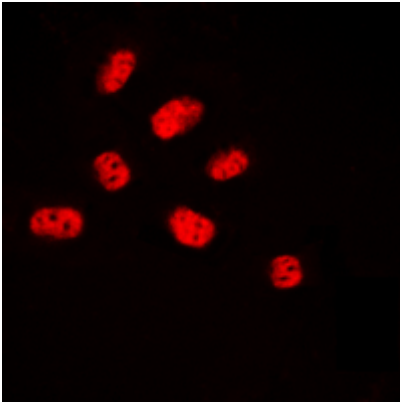
WB description:

Western blot analysis of NET (pS357) expression in HUVEC PMA-treated (A), HT29 PMA-treated (B) whole cell lysates.



IF/ICC description:

Immunofluorescent analysis of NET (pS357) staining in HUVEC cells. Formalin-fixed cells were permeabilized with 0.1% Triton X-100 in TBS for 5-10 minutes and blocked with 3% BSA-PBS for 30 minutes at room temperature. Cells were probed with the primary an



IP description:

Storage:

Store at -20°C. Avoid repeated freeze / thaw cycles.