

Manufacturer/Supplier:

WUXI DONGLIN SCI&TECH DEVELOPMENT CO., LTD

Address: A1-203 Mingpin CityII, No.8 Xihudong Road, Liangxi District
Wuxi Jiangsu Province, China

TELE: 86-510-82732223

FAX: 86-510-82720101-8014

Web : www.dldevelop.com

Email: info@dldevelop.com.cn service@dldevelop.com.cn

Product name: Rabbit anti-p38 (pT180) Antibody

Catalog: DL92187A

Synonyms: CSBP; CSBP1; CSBP2; CSPB1; MXI2; SAPK2A;
Mitogen-activated protein kinase 14; MAP kinase
14; MAPK 14; Cytokine suppressive
anti-inflammatory drug-binding protein;
CSAID-binding protein; CSBP; MAP kinase MXI2;
MAX-interacting protein 2; Mitogen-activated

Immunogen: KLH-conjugated synthetic peptide encompassing a
sequence within the center region of human p38
(pT180). The exact sequence is proprietary.

Form: Liquid

Concentration: 1mg/mL

Size: 100 ul/50 ul

Host: Rabbit

Reactivity:
Human, Mouse, Rat, Dog, Zebrafish

Application: WB, IF/IC, IP

Clonality: Polyclonal

Dilution: WB (1/500 - 1/1000),
IF/IC (1/100 - 1/500), IP (1/10 -
1/100)

Entrez Gene: 1432/26416

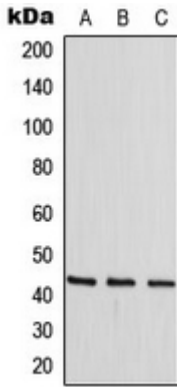
SwissProt: Q16539/P47811/P70618

Purification: The antibody was purified by immunogen affinity chromatography.

Buffer: Liquid in 0.42% Potassium phosphate, 0.87% Sodium chloride, pH 7.3, 30% glycerol, and 0.01% sodium azide.

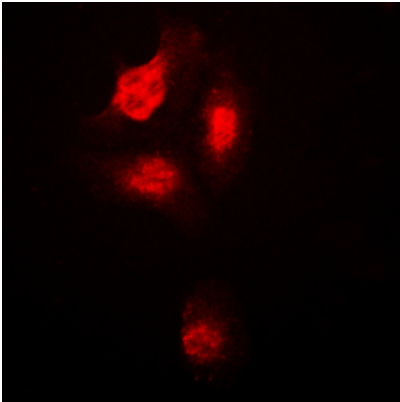
WB description:

Western blot analysis of p38 (pT180) expression in HepG2 PMA-treated (A), NIH3T3 (B), PC12 (C) whole cell lysates.



IF/ICC description:

Immunofluorescent analysis of p38 (pT180) staining in HepG2 cells. Formalin-fixed cells were permeabilized with 0.1% Triton X-100 in TBS for 5-10 minutes and blocked with 3% BSA-PBS for 30 minutes at room temperature. Cells were probed with the primary an



IP description:

Storage:

Store at -20°C. Avoid repeated freeze / thaw cycles.