

Manufacturer/Supplier:

WUXI DONGLIN SCI&TECH DEVELOPMENT CO., LTD

Address: A1-203 Mingpin CityII, No.8 Xihudong Road, Liangxi District
Wuxi Jiangsu Province, China

TELE: 86-510-82732223

FAX: 86-510-82720101-8014

Web : www.dldevelop.com

Email: info@dldevelop.com.cn service@dldevelop.com.cn

Product name: Rabbit anti-BTK (pY223) Antibody

Catalog: DL92152A

Synonyms: AGMX1; ATK; BPK; Tyrosine-protein kinase
BTK; Agammaglobulinemia tyrosine kinase; ATK;
B-cell progenitor kinase; BPK; Bruton tyrosine
kinase

Immunogen: KLH-conjugated synthetic peptide encompassing a
sequence within the center region of human BTK
(pY223). The exact sequence is proprietary.

Form: Liquid

Concentration: 1mg/mL

Size: 100 ul/50 ul

Host: Rabbit

Reactivity:

Application: WB

Human,Mouse,Rat,Bovine

Clonality: Polyclonal

Dilution: WB (1/500 - 1/1000)

Entrez Gene: 695/12229

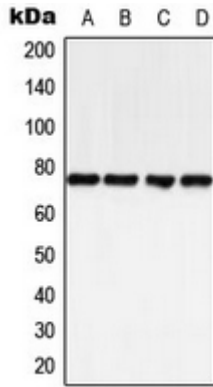
SwissProt: Q06187/P35991

Purification: The antibody was purified by immunogen affinity chromatography.

Buffer: Liquid in 0.42% Potassium phosphate, 0.87% Sodium chloride, pH 7.3, 30% glycerol, and 0.01% sodium azide.

WB description:

Western blot analysis of BTK (pY223) expression in DLD (A), mouse liver (B), rat liver (C), rat kidney (D) whole cell lysates.



Storage:

Store at -20°C. Avoid repeated freeze / thaw cycles.