

Manufacturer/Supplier:

WUXI DONGLIN SCI&TECH DEVELOPMENT CO., LTD

Address: A1-203 Mingpin CityII, No.8 Xihudong Road, Liangxi District
Wuxi Jiangsu Province, China

TELE: 86-510-82732223

FAX: 86-510-82720101-8014

Web : www.dldevelop.com

Email: info@dldevelop.com.cn service@dldevelop.com.cn

Product name: Rabbit anti-BAD (pS136) Antibody

Catalog: DL92141A

Synonyms: BBC6; BCL2L8; Bcl2 antagonist of cell death;
BAD; Bcl-2-binding component 6; Bcl-2-like
protein 8; Bcl2-L-8; Bcl-XL/Bcl-2-associated death
promoter

Immunogen: KLH-conjugated synthetic peptide encompassing a
sequence within the center region of human BAD
(pS136). The exact sequence is proprietary.

Form: Liquid

Concentration: 1mg/mL

Size: 100 ul/50 ul

Host: Rabbit

Reactivity:

Application: WB, IHC

Human, Mouse, Rat, Bovine

Clonality: Polyclonal

Dilution: WB (1/500 - 1/1000),
IHC (1/100 - 1/200)

Entrez Gene: 572/12015/64639

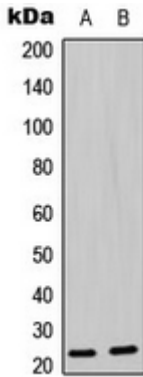
SwissProt: Q92934/Q61337/O35147

Purification: The antibody was purified by immunogen affinity chromatography.

Buffer: Liquid in 0.42% Potassium phosphate, 0.87% Sodium chloride, pH 7.3, 30% glycerol, and 0.01% sodium azide.

WB description:

Western blot analysis of BAD (pS136) expression in MOLT4 (A), U2OS (B) whole cell lysates.



IHC description:

Immunohistochemical analysis of BAD (pS136) staining in human prostate cancer formalin fixed paraffin embedded tissue section. The section was pre-treated using heat mediated antigen retrieval with sodium citrate buffer (pH 6.0). The section was then incubated with the antibody at room temperature and detected using an HRP conjugated compact polymer system. DAB was used as the chromogen. The section was then counterstained with haematoxylin and mounted with DPX.

Storage:

Store at -20°C. Avoid repeated freeze / thaw cycles.