

**Manufacturer/Supplier:**

WUXI DONGLIN SCI&TECH DEVELOPMENT CO., LTD

**Address:** A1-203 Mingpin CityII, No.8 Xihudong Road, Liangxi District  
Wuxi Jiangsu Province, China

TELE: 86-510-82732223

FAX: 86-510-82720101-8014

**Web :** [www.dldevelop.com](http://www.dldevelop.com)

Email: [info@dldevelop.com.cn](mailto:info@dldevelop.com.cn) [service@dldevelop.com.cn](mailto:service@dldevelop.com.cn)

**Product name:** Rabbit anti-Annexin A2 (pS26) Antibody

**Catalog:** DL92128A

**Synonyms:** ANX2; ANX2L4; CAL1H; LPC2D; Annexin A2;  
Annexin II; Annexin-2; Calpactin I heavy chain;  
Calpactin-1 heavy chain; Chromobindin-8;  
Lipocortin II; Placental anticoagulant protein IV;  
PAP-IV; Protein I; p36

**Immunogen:** KLH-conjugated synthetic peptide encompassing a  
sequence within the N-term region of human  
Annexin A2 (pS26). The exact sequence is  
proprietary.

**Form:** Liquid

**Concentration:** 1mg/mL

**Size:** 100 ul/50 ul

**Host:** Rabbit

**Reactivity:**

Human, Mouse, Rat, Bovine, Dog, Monkey, Sheep

**Application:** WB, IP**Clonality:** Polyclonal

**Dilution:** WB (1/500 - 1/1000), IP (1/10 - 1/100)

**Entrez Gene:**

302/12306/56611

**SwissProt:**

P07355/P07356/Q07936

**Purification:**

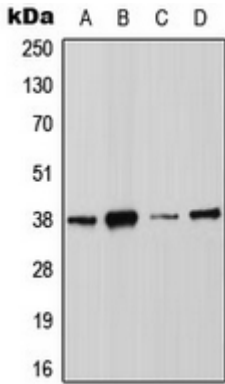
The antibody was purified by immunogen affinity chromatography.

**Buffer:**

Liquid in 0.42% Potassium phosphate, 0.87% Sodium chloride, pH 7.3, 30% glycerol, and 0.01% sodium azide.

**WB description:**

Western blot analysis of Annexin A2 (pS26) expression in MCF7 (A), HCT116 (B), HeLa (C), NIH3T3 (D) whole cell lysates.



**IP description:**

**Storage:**

Store at -20°C. Avoid repeated freeze / thaw cycles.