

Manufacturer/Supplier:

WUXI DONGLIN SCI&TECH DEVELOPMENT CO., LTD

Address: A1-203 Mingpin CityII, No.8 Xihudong Road, Liangxi District
Wuxi Jiangsu Province, China

TELE: 86-510-82732223

FAX: 86-510-82720101-8014

Web : www.dldevelop.com

Email: info@dldevelop.com.cn service@dldevelop.com.cn

Product name: Rabbit anti-Alpha-2C Adrenergic Receptor
Antibody

Catalog: DL92115A

Synonyms: ADRA2L2; ADRA2RL2; Alpha-2C adrenergic
receptor; Alpha-2 adrenergic receptor subtype C4;
Alpha-2C adrenoreceptor; Alpha-2C adrenoceptor;
Alpha-2CAR

Immunogen: KLH-conjugated synthetic peptide encompassing a
sequence within the C-term region of human
Alpha-2C Adrenergic Receptor. The exact sequence
is proprietary.

Form: Liquid

Concentration: 1mg/mL

Size: 100 ul/50 ul

Host: Rabbit

Reactivity:

Human, Mouse, Rat, Pig

Application: WB, IHC**Clonality:** Polyclonal

Dilution: WB (1/500 - 1/1000),
IHC (1/100 - 1/200)

Entrez Gene:

152/11553/24175

SwissProt:

P18825/Q01337/P22086

Purification:

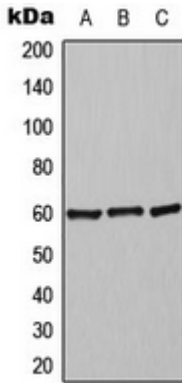
The antibody was purified by immunogen affinity chromatography.

Buffer:

Liquid in 0.42% Potassium phosphate, 0.87% Sodium chloride, pH 7.3, 30% glycerol, and 0.01% sodium azide.

WB description:

Western blot analysis of Alpha-2C Adrenergic Receptor expression in Jurkat (A), mouse liver (B), rat liver (C) whole cell lysates.



IHC description:

Immunohistochemical analysis of Alpha-2C Adrenergic Receptor staining in human breast cancer formalin fixed paraffin embedded tissue section. The section was pre-treated using heat mediated antigen retrieval with sodium citrate buffer (pH 6.0). The section was then incubated with the antibody at room temperature and detected using an HRP conjugated compact polymer system. DAB was used as the chromogen. The section was then counterstained with haematoxylin and mounted with DPX.

Storage:

Store at -20°C. Avoid repeated freeze / thaw cycles.