

Manufacturer/Supplier:

WUXI DONGLIN SCI&TECH DEVELOPMENT CO., LTD

Address: A1-203 Mingpin CityII, No.8 Xihudong Road, Liangxi District
Wuxi Jiangsu Province, China

TELE: 86-510-82732223

FAX: 86-510-82720101-8014

Web : www.dldevelop.com

Email: info@dldevelop.com.cn service@dldevelop.com.cn

Product name: Rabbit anti-MINA53 Antibody

Catalog: DL92086A

Synonyms: MDIG; MINA53; NO52; Bifunctional lysine-specific demethylase and histidyl-hydroxylase MINA; 60S ribosomal protein L27a histidine hydroxylase; Histone lysine demethylase MINA; MYC-induced nuclear antigen; Mineral dust-induced gene protein; Nucleolar protei

Immunogen: KLH-conjugated synthetic peptide encompassing a sequence within the center region of human MINA53. The exact sequence is proprietary.

Form: Liquid

Concentration: 1mg/mL

Size: 100 ul/50 ul

Host: Rabbit

Reactivity: Human, Mouse, Rat **Application:** WB

Clonality: Polyclonal **Dilution:** WB (1/500 - 1/1000)

Entrez Gene: 84864/67014/266670

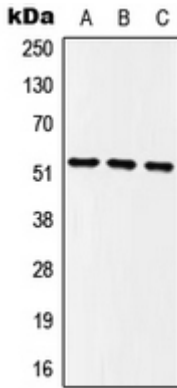
SwissProt: Q8IUF8/Q8CD15/Q8CFC1

Purification: The antibody was purified by immunogen affinity chromatography.

Buffer: Liquid in 0.42% Potassium phosphate, 0.87% Sodium chloride, pH 7.3, 30% glycerol, and 0.01% sodium azide.

WB description:

Western blot analysis of MINA53 expression in HEK293T (A), NIH3T3 (B), PC12 (C) whole cell lysates.



Storage:

Store at -20°C. Avoid repeated freeze / thaw cycles.