

**Manufacturer/Supplier:**

WUXI DONGLIN SCI&TECH DEVELOPMENT CO., LTD

**Address:** A1-203 Mingpin CityII, No.8 Xihudong Road, Liangxi District  
Wuxi Jiangsu Province, China

TELE: 86-510-82732223

FAX: 86-510-82720101-8014

**Web :** [www.dldevelop.com](http://www.dldevelop.com)

Email: [info@dldevelop.com.cn](mailto:info@dldevelop.com.cn) [service@dldevelop.com.cn](mailto:service@dldevelop.com.cn)

**Product name:** Rabbit anti-RAPH1 Antibody

**Catalog:** DL92079A

**Synonyms:** ALS2CR18; ALS2CR9; KIAA1681; LPD; PREL2;  
RMO1; Ras-associated and pleckstrin homology  
domains-containing protein 1; RAPH1;  
Amyotrophic lateral sclerosis 2 chromosomal region  
candidate gene 18 protein; Amyotrophic lateral  
sclerosis 2 chromosomal region can

**Immunogen:** KLH-conjugated synthetic peptide encompassing a  
sequence within the center region of human  
RAPH1. The exact sequence is proprietary.

**Form:** Liquid

**Concentration:** 1mg/mL

**Size:** 100 ul/50 ul

**Host:** Rabbit

**Reactivity:** Human, Mouse, Rat

**Application:** WB

**Clonality:** Polyclonal

**Dilution:** WB (1/500 - 1/1000)

**Entrez Gene:** 65059

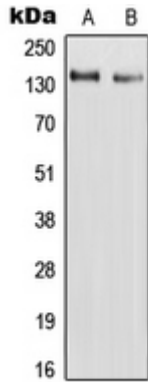
**SwissProt:** Q70E73

**Purification:** The antibody was purified by immunogen affinity chromatography.

**Buffer:** Liquid in 0.42% Potassium phosphate, 0.87% Sodium chloride, pH 7.3, 30% glycerol, and 0.01% sodium azide.

**WB description:**

Western blot analysis of RAPH1 expression in HepG2 (A), H9C2 (B) whole cell lysates.



**Storage:**

Store at -20°C. Avoid repeated freeze / thaw cycles.