

Manufacturer/Supplier:

WUXI DONGLIN SCI&TECH DEVELOPMENT CO., LTD

Address: A1-203 Mingpin CityII, No.8 Xihudong Road, Liangxi District
Wuxi Jiangsu Province, China

TELE: 86-510-82732223

FAX: 86-510-82720101-8014

Web : www.dldevelop.com

Email: info@dldevelop.com.cn service@dldevelop.com.cn

Product name: Rabbit anti-MED29 Antibody

Catalog: DL92068A

Synonyms: IXL; Mediator of RNA polymerase II transcription subunit 29; Intersex-like protein; Mediator complex subunit 29

Immunogen: KLH-conjugated synthetic peptide encompassing a sequence within the center region of human MED29. The exact sequence is proprietary.

Form: Liquid

Concentration: 1mg/mL

Size: 100 ul/50 ul

Host: Rabbit

Reactivity:
Human, Mouse, Rat, Bovine, Monke

Application: WB

y

Clonality: Polyclonal

Dilution: WB (1/500 - 1/1000)

Entrez Gene: 55588/67224

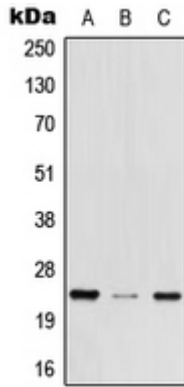
SwissProt: Q9NX70/Q9DB91

Purification: The antibody was purified by immunogen affinity chromatography.

Buffer: Liquid in 0.42% Potassium phosphate, 0.87% Sodium chloride, pH 7.3, 30% glycerol, and 0.01% sodium azide.

WB description:

Western blot analysis of MED29 expression in HEK293T (A), mouse brain (B), rat lung (C) whole cell lysates.



Storage:

Store at -20°C. Avoid repeated freeze / thaw cycles.