

Manufacturer/Supplier:

WUXI DONGLIN SCI&TECH DEVELOPMENT CO., LTD

Address: A1-203 Mingpin CityII, No.8 Xihudong Road, Liangxi District
Wuxi Jiangsu Province, China

TELE: 86-510-82732223

FAX: 86-510-82720101-8014

Web : www.dldevelop.com

Email: info@dldevelop.com.cn service@dldevelop.com.cn

Product name: Rabbit anti-POLR3K Antibody

Catalog: DL92063A

Synonyms: RPC11; DNA-directed RNA polymerase III subunit
RPC10; RNA polymerase III subunit C10;
DNA-directed RNA polymerase III subunit K; RNA
polymerase III 12.5 kDa subunit; RPC12.5; RNA
polymerase III subunit C11; HsC11p; RPC11;
hRPC11

Immunogen: KLH-conjugated synthetic peptide encompassing a
sequence within the center region of human
POLR3K. The exact sequence is proprietary.

Form: Liquid

Concentration: 1mg/mL

Size: 100 ul/50 ul

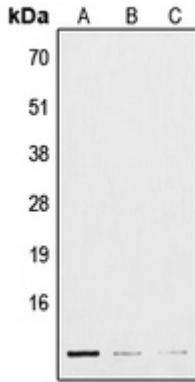
Host: Rabbit

Reactivity:

Human, Mouse, Rat, Bovine, Dog, Pig

Application: WB**Clonality:** Polyclonal**Dilution:** WB (1/500 - 1/1000)**Entrez Gene:** 51728/67005**SwissProt:** Q9Y2Y1/Q9CQZ7**Purification:** The antibody was purified by immunogen affinity chromatography.**Buffer:** Liquid in 0.42% Potassium phosphate, 0.87% Sodium chloride, pH 7.3, 30% glycerol, and 0.01% sodium azide.**WB description:**

Western blot analysis of POLR3K expression in HepG2 (A), mouse lung (B), H9C2 (C) whole cell lysates.



Storage:

Store at -20°C. Avoid repeated freeze / thaw cycles.