

Manufacturer/Supplier:

WUXI DONGLIN SCI&TECH DEVELOPMENT CO., LTD

Address: A1-203 Mingpin CityII, No.8 Xihudong Road, Liangxi District
Wuxi Jiangsu Province, China

TELE: 86-510-82732223

FAX: 86-510-82720101-8014

Web : www.dldevelop.com

Email: info@dldevelop.com.cn service@dldevelop.com.cn

Product name: Rabbit anti-CIB1 Antibody

Catalog: DL92040A

Synonyms: CIB; KIP; PRKDCIP; Calcium and integrin-binding protein 1; CIB; Calcium- and integrin-binding protein; CIBP; Calmyrin; DNA-PKcs-interacting protein; Kinase-interacting protein; KIP; SNK-interacting protein 2-28; SIP2-28

Immunogen: KLH-conjugated synthetic peptide encompassing a sequence within the center region of human CIB1. The exact sequence is proprietary.

Form: Liquid

Concentration: 1mg/mL

Size: 100 ul/50 ul

Host: Rabbit

Reactivity: Human,Rat,Monkey **Application:** WB

Clonality: Polyclonal **Dilution:** WB (1/500 - 1/1000)

Entrez Gene: 10519/81823

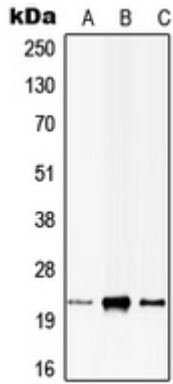
SwissProt: Q99828/Q9R010

Purification: The antibody was purified by immunogen affinity chromatography.

Buffer: Liquid in 0.42% Potassium phosphate, 0.87% Sodium chloride, pH 7.3, 30% glycerol, and 0.01% sodium azide.

WB description:

Western blot analysis of CIB1 expression in HEK293T (A), H9C2 (B), rat brain (C) whole cell lysates.



Storage:

Store at -20°C. Avoid repeated freeze / thaw cycles.