

**Manufacturer/Supplier:**

WUXI DONGLIN SCI&TECH DEVELOPMENT CO., LTD

**Address:** A1-203 Mingpin CityII, No.8 Xihudong Road, Liangxi District  
Wuxi Jiangsu Province, China

TELE: 86-510-82732223

FAX: 86-510-82720101-8014

**Web :** [www.dldevelop.com](http://www.dldevelop.com)

Email: [info@dldevelop.com.cn](mailto:info@dldevelop.com.cn) [service@dldevelop.com.cn](mailto:service@dldevelop.com.cn)

**Product name:** Rabbit anti-JIP4 Antibody

**Catalog:** DL92031A

**Synonyms:** HSS; KIAA0516; MAPK8IP4; SYD1;  
C-Jun-amino-terminal kinase-interacting protein 4;  
JIP-4; JNK-interacting protein 4; Cancer/testis  
antigen 89; CT89; Human lung cancer oncogene 6  
protein; HLC-6; JNK-associated leucine-zipper  
protein; JLP; Mitogen-activated

**Immunogen:** KLH-conjugated synthetic peptide encompassing a  
sequence within the center region of human JIP4.  
The exact sequence is proprietary.

**Form:** Liquid

**Concentration:** 1mg/mL

**Size:** 100 ul/50 ul

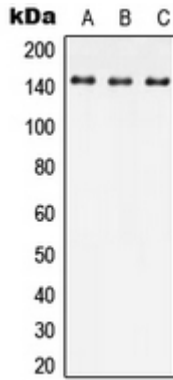
**Host:** Rabbit

**Reactivity:**

Human, Mouse, Rat, Bovine

**Application:** WB**Clonality:** Polyclonal**Dilution:** WB (1/500 - 1/1000)**Entrez Gene:** 9043/70834**SwissProt:** O60271/Q58A65**Purification:** The antibody was purified by immunogen affinity chromatography.**Buffer:** Liquid in 0.42% Potassium phosphate, 0.87% Sodium chloride, pH 7.3, 30% glycerol, and 0.01% sodium azide.**WB description:**

Western blot analysis of JIP4 expression in HEK293T (A), Raw264.7 (B), SP2/0 (C) whole cell lysates.



**Storage:**

Store at -20°C. Avoid repeated freeze / thaw cycles.