

Manufacturer/Supplier:

WUXI DONGLIN SCI&TECH DEVELOPMENT CO., LTD

Address: A1-203 Mingpin CityII, No.8 Xihudong Road. Liangxi District
Wuxi Jiangsu Province, China

TELE: 86-510-82732223

FAX: 86-510-82720101-8014

Web : www.dldevelop.com

Email: info@dldevelop.com.cn service@dldevelop.com.cn

Product name: Rabbit anti-SHOX Antibody

Catalog: DL92011A

Synonyms: PHOG; Short stature homeobox protein;
Pseudoautosomal homeobox-containing osteogenic
protein; Short stature homeobox-containing protein

Immunogen: KLH-conjugated synthetic peptide encompassing a
sequence within the center region of human SHOX.
The exact sequence is proprietary.

Form: Liquid

Concentration: 1mg/mL

Size: 100 ul/50 ul

Host: Rabbit

Reactivity:
Human, Mouse, Chicken, Dog

Application: WB

Clonality: Polyclonal

Dilution: WB (1/500 - 1/1000)

Entrez Gene: 6473

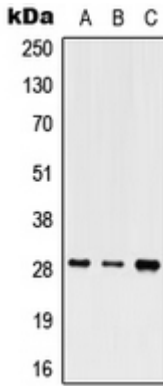
SwissProt: O15266

Purification: The antibody was purified by immunogen affinity chromatography.

Buffer: Liquid in 0.42% Potassium phosphate, 0.87% Sodium chloride, pH 7.3, 30% glycerol, and 0.01% sodium azide.

WB description:

Western blot analysis of SHOX expression in HEK293T (A), Raw264.7 (B), SP2/0 (C) whole cell lysates.



Storage:

Store at -20°C. Avoid repeated freeze / thaw cycles.