

Manufacturer/Supplier:

WUXI DONGLIN SCI&TECH DEVELOPMENT CO., LTD

Address: A1-203 Mingpin CityII, No.8 Xihudong Road, Liangxi District
Wuxi Jiangsu Province, China

TELE: 86-510-82732223

FAX: 86-510-82720101-8014

Web : www.dldevelop.com

Email: info@dldevelop.com.cn service@dldevelop.com.cn

Product name: Rabbit anti-ROS (pY2114) Antibody

Catalog: DL92006A

Synonyms: MCF3; ROS; Proto-oncogene tyrosine-protein kinase ROS; Proto-oncogene c-Ros; Proto-oncogene c-Ros-1; Receptor tyrosine kinase c-ros oncogene 1; c-Ros receptor tyrosine kinase

Immunogen: KLH-conjugated synthetic peptide encompassing a sequence within the C-term region of human ROS (pY2114). The exact sequence is proprietary.

Form: Liquid

Concentration: 1mg/mL

Size: 100 ul/50 ul

Host: Rabbit

Reactivity:

Application: WB

Human, Mouse, Rat, Bovine, Chicken, Pig, Rabbit

Clonality: Polyclonal

Dilution: WB (1/500 - 1/1000)

Entrez Gene: 6098/19886/25346

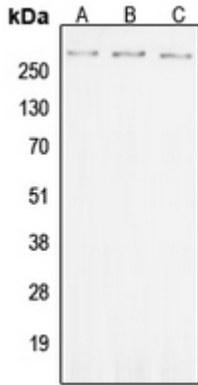
SwissProt: P08922/Q78DX7/Q63132

Purification: The antibody was purified by immunogen affinity chromatography.

Buffer: Liquid in 0.42% Potassium phosphate, 0.87% Sodium chloride, pH 7.3, 30% glycerol, and 0.01% sodium azide.

WB description:

Western blot analysis of ROS (pY2114) expression in SKOV3 (A), Raw264.7 (B), PC12 (C) whole cell lysates.



Storage:

Store at -20°C. Avoid repeated freeze / thaw cycles.