

Manufacturer/Supplier:

WUXI DONGLIN SCI&TECH DEVELOPMENT CO., LTD

Address: A1-203 Mingpin CityII, No.8 Xihudong Road, Liangxi District
Wuxi Jiangsu Province, China

TELE: 86-510-82732223

FAX: 86-510-82720101-8014

Web : www.dldevelop.com

Email: info@dldevelop.com.cn service@dldevelop.com.cn

Product name: Rabbit anti-CTIP (pS327) Antibody

Catalog: DL92004A

Synonyms: CTIP; DNA endonuclease RBBP8;
CtBP-interacting protein; CtIP;
Retinoblastoma-binding protein 8; RBBP-8;
Retinoblastoma-interacting protein and myosin-like;
RIM; Sporulation in the absence of SPO11 protein 2
homolog; SAE2

Immunogen: KLH-conjugated synthetic peptide encompassing a
sequence within the center region of human CTIP
(pS327). The exact sequence is proprietary.

Form: Liquid

Concentration: 1mg/mL

Size: 100 ul/50 ul

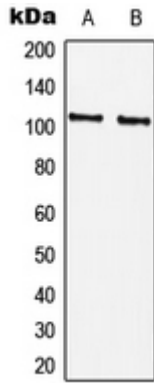
Host: Rabbit

Reactivity:

Human, Mouse, Monkey

Application: WB**Clonality:** Polyclonal**Dilution:** WB (1/500 - 1/1000)**Entrez Gene:** 5932/225182**SwissProt:** Q99708/Q80YR6**Purification:** The antibody was purified by immunogen affinity chromatography.**Buffer:** Liquid in 0.42% Potassium phosphate, 0.87% Sodium chloride, pH 7.3, 30% glycerol, and 0.01% sodium azide.**WB description:**

Western blot analysis of CTIP (pS327) expression in HEK293T (A), Raw264.7 (B) whole cell lysates.



Storage:

Store at -20°C. Avoid repeated freeze / thaw cycles.