

Manufacturer/Supplier:

WUXI DONGLIN SCI&TECH DEVELOPMENT CO., LTD

Address: A1-203 Mingpin CityII, No.8 Xihudong Road, Liangxi District
Wuxi Jiangsu Province, China

TELE: 86-510-82732223

FAX: 86-510-82720101-8014

Web : www.dldevelop.com

Email: info@dldevelop.com.cn service@dldevelop.com.cn

Product name: Rabbit anti-RBBP6 Antibody

Catalog: DL92003A

Synonyms: P2PR; PACT; RBQ1; E3 ubiquitin-protein ligase
RBBP6; Proliferation potential-related protein;
Protein P2P-R; Retinoblastoma-binding Q protein 1;
RBQ-1; Retinoblastoma-binding protein 6;
p53-associated cellular protein of testis

Immunogen: KLH-conjugated synthetic peptide encompassing a
sequence within the center region of human RBBP6.
The exact sequence is proprietary.

Form: Liquid

Concentration: 1mg/mL

Size: 100 ul/50 ul

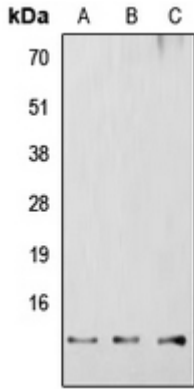
Host: Rabbit

Reactivity:

Human, Mouse, Rat, Monkey

Application: WB**Clonality:** Polyclonal**Dilution:** WB (1/500 - 1/1000)**Entrez Gene:** 5930/19647**SwissProt:** Q7Z6E9/P97868**Purification:** The antibody was purified by immunogen affinity chromatography.**Buffer:** Liquid in 0.42% Potassium phosphate, 0.87% Sodium chloride, pH 7.3, 30% glycerol, and 0.01% sodium azide.**WB description:**

Western blot analysis of RBBP6 expression in HEK293T (A), Raw264.7 (B), H9C2 (C) whole cell lysates.



Storage:

Store at -20°C. Avoid repeated freeze / thaw cycles.