

Manufacturer/Supplier:

WUXI DONGLIN SCI&TECH DEVELOPMENT CO., LTD

Address: A1-203 Mingpin CityII, No.8 Xihudong Road. Liangxi District
Wuxi Jiangsu Province, China

TELE: 86-510-82732223

FAX: 86-510-82720101-8014

Web : www.dldevelop.com

Email: info@dldevelop.com.cn service@dldevelop.com.cn

Product name: Rabbit anti-POLR2K Antibody

Catalog: DL91999A

Synonyms: DNA-directed RNA polymerases I, II, and III subunit RPABC4; RNA polymerases I, II, and III subunit ABC4; ABC10-alpha; DNA-directed RNA polymerase II subunit K; RNA polymerase II 7.0 kDa subunit; RPB7.0; RPB10alpha

Immunogen: KLH-conjugated synthetic peptide encompassing a sequence within the center region of human POLR2K. The exact sequence is proprietary.

Form: Liquid

Concentration: 1mg/mL

Size: 100 ul/50 ul

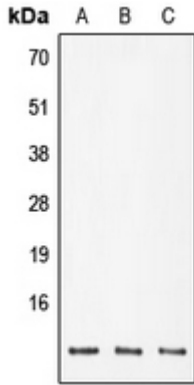
Host: Rabbit

Reactivity:

Human, Mouse, Rat, Bovine, Monkey

Application: WB**Clonality:** Polyclonal**Dilution:** WB (1/500 - 1/1000)**Entrez Gene:** 5440/17749**SwissProt:** P53803/Q63871**Purification:** The antibody was purified by immunogen affinity chromatography.**Buffer:** Liquid in 0.42% Potassium phosphate, 0.87% Sodium chloride, pH 7.3, 30% glycerol, and 0.01% sodium azide.**WB description:**

Western blot analysis of POLR2K expression in DLD (A), SP2/0 (B), PC12 (C) whole cell lysates.



Storage:

Store at -20°C. Avoid repeated freeze / thaw cycles.