

Manufacturer/Supplier:

WUXI DONGLIN SCI&TECH DEVELOPMENT CO., LTD

Address: A1-203 Mingpin CityII, No.8 Xihudong Road, Liangxi District
Wuxi Jiangsu Province, China

TELE: 86-510-82732223

FAX: 86-510-82720101-8014

Web : www.dldevelop.com

Email: info@dldevelop.com.cn service@dldevelop.com.cn

Product name: Rabbit anti-Myosin 9 Antibody

Catalog: DL91988A

Synonyms: Myosin-9; Cellular myosin heavy chain, type A;
Myosin heavy chain 9; Myosin heavy chain,
non-muscle IIa; Non-muscle myosin heavy chain A;
NMMHC-A; Non-muscle myosin heavy chain IIa;
NMMHC II-a; NMMHC-IIA

Immunogen: KLH-conjugated synthetic peptide encompassing a
sequence within the C-term region of human
Myosin 9. The exact sequence is proprietary.

Form: Liquid

Concentration: 1mg/mL

Size: 100 ul/50 ul

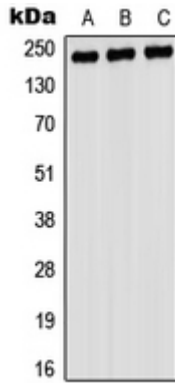
Host: Rabbit

Reactivity:

Human, Mouse, Rat, Dog, Pig

Application: WB**Clonality:** Polyclonal**Dilution:** WB (1/500 - 1/1000)**Entrez Gene:** 4627/17886/25745**SwissProt:** P35579/Q8VDD5/Q62812**Purification:** The antibody was purified by immunogen affinity chromatography.**Buffer:** Liquid in 0.42% Potassium phosphate, 0.87% Sodium chloride, pH 7.3, 30% glycerol, and 0.01% sodium azide.**WB description:**

Western blot analysis of Myosin 9 expression in A549 (A), rat testis (B), PC12 (C) whole cell lysates.



Storage:

Store at -20°C. Avoid repeated freeze / thaw cycles.