

Manufacturer/Supplier:

WUXI DONGLIN SCI&TECH DEVELOPMENT CO., LTD

Address: A1-203 Mingpin CityII, No.8 Xihudong Road. Liangxi District
Wuxi Jiangsu Province, China

TELE: 86-510-82732223

FAX: 86-510-82720101-8014

Web : www.dldevelop.com

Email: info@dldevelop.com.cn service@dldevelop.com.cn

Product name: Rabbit anti-p22 phox Antibody

Catalog: DL91950A

Synonyms: Cytochrome b-245 light chain; Cytochrome b(558) alpha chain; Cytochrome b558 subunit alpha; Neutrophil cytochrome b 22 kDa polypeptide; Superoxide-generating NADPH oxidase light chain subunit; p22 phagocyte B-cytochrome; p22-phox; p22phox

Immunogen: KLH-conjugated synthetic peptide encompassing a sequence within the center region of human p22 phox. The exact sequence is proprietary.

Form: Liquid

Concentration: 1mg/mL

Size: 100 ul/50 ul

Host: Rabbit

Reactivity:

Human, Mouse, Rat, Pig

Application: WB**Clonality:** Polyclonal**Dilution:** WB (1/500 - 1/1000)**Entrez Gene:**

1535/13057/79129

SwissProt:

P13498/Q61462/Q62737

Purification:

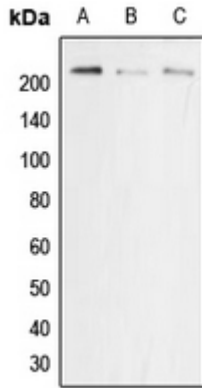
The antibody was purified by immunogen affinity chromatography.

Buffer:

Liquid in 0.42% Potassium phosphate, 0.87% Sodium chloride, pH 7.3, 30% glycerol, and 0.01% sodium azide.

WB description:

Western blot analysis of p22 phox expression in MCF7 (A), NIH3T3 (B), PC12 (C) whole cell lysates.



Storage:

Store at -20°C. Avoid repeated freeze / thaw cycles.