

Manufacturer/Supplier:

WUXI DONGLIN SCI&TECH DEVELOPMENT CO., LTD

Address: A1-203 Mingpin CityII, No.8 Xihudong Road, Liangxi District
Wuxi Jiangsu Province, China

TELE: 86-510-82732223

FAX: 86-510-82720101-8014

Web : www.dldevelop.com

Email: info@dldevelop.com.cn service@dldevelop.com.cn

Product name: Rabbit anti-Cav1.2 Antibody

Catalog: DL91937A

Synonyms: CACH2; CACN2; CACNL1A1; CCHL1A1;
Voltage-dependent L-type calcium channel subunit
alpha-1C; Calcium channel, L type, alpha-1
polypeptide, isoform 1, cardiac muscle;
Voltage-gated calcium channel subunit alpha
Cav1.2

Immunogen: KLH-conjugated synthetic peptide encompassing a
sequence within the center region of human Cav1.2.
The exact sequence is proprietary.

Form: Liquid

Concentration: 1mg/mL

Size: 100 ul/50 ul

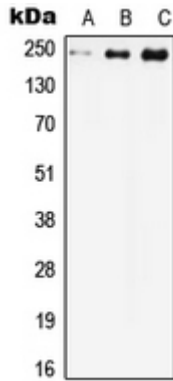
Host: Rabbit

Reactivity:

Human, Mouse, Rat, Rabbit

Application: WB**Clonality:** Polyclonal**Dilution:** WB (1/500 - 1/1000)**Entrez Gene:** 775/12288/24239**SwissProt:** Q13936/Q01815/P22002**Purification:** The antibody was purified by immunogen affinity chromatography.**Buffer:** Liquid in 0.42% Potassium phosphate, 0.87% Sodium chloride, pH 7.3, 30% glycerol, and 0.01% sodium azide.**WB description:**

Western blot analysis of Cav1.2 expression in HEK293T (A), Raw264.7 (B), H9C2 (C) whole cell lysates.



Storage:

Store at -20°C. Avoid repeated freeze / thaw cycles.