

Manufacturer/Supplier:

WUXI DONGLIN SCI&TECH DEVELOPMENT CO., LTD

Address: A1-203 Mingpin CityII, No.8 Xihudong Road, Liangxi District
Wuxi Jiangsu Province, China

TELE: 86-510-82732223

FAX: 86-510-82720101-8014

Web : www.dldevelop.com

Email: info@dldevelop.com.cn service@dldevelop.com.cn

Product name: Rabbit anti-SFTPA1/2 Antibody

Catalog: DL91923A

Synonyms: SFTPA2; COLEC5; PSAP; SFTP1; SFTPA;
SFTPA2B; Pulmonary surfactant-associated protein
A2; PSP-A; PSPA; SP-A; SP-A2; 35 kDa
pulmonary surfactant-associated protein; Alveolar
proteinosis protein; Collectin-5; SFTPA1;
COLEC4; PSAP; SFTP1; SFTPA; SFTPA1B; Pulm

Immunogen: KLH-conjugated synthetic peptide encompassing a
sequence within the center region of human
SFTPA1/2. The exact sequence is proprietary.

Form: Liquid

Concentration: 1mg/mL

Size: 100 ul/50 ul

Host: Rabbit

Reactivity: Human, Mouse

Application: WB

Clonality: Polyclonal

Dilution: WB (1/500 - 1/1000)

Entrez Gene:

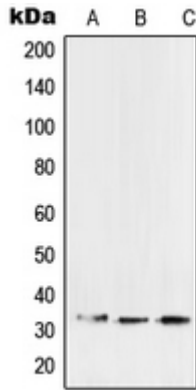
SwissProt: Q8IWL1; Q8IWL2/P35242

Purification: The antibody was purified by immunogen affinity chromatography.

Buffer: Liquid in 0.42% Potassium phosphate, 0.87% Sodium chloride, pH 7.3, 30% glycerol, and 0.01% sodium azide.

WB description:

Western blot analysis of SFTPA1/2 expression in A549 (A), HCT15 (B), mouse lung (C) whole cell lysates.



Storage:

Store at -20°C. Avoid repeated freeze / thaw cycles.