

**Manufacturer/Supplier:**

WUXI DONGLIN SCI&TECH DEVELOPMENT CO., LTD

**Address:** A1-203 Mingpin CityII, No.8 Xihudong Road, Liangxi District  
Wuxi Jiangsu Province, China

TELE: 86-510-82732223

FAX: 86-510-82720101-8014

**Web :** [www.dldevelop.com](http://www.dldevelop.com)

Email: [info@dldevelop.com.cn](mailto:info@dldevelop.com.cn)    [service@dldevelop.com.cn](mailto:service@dldevelop.com.cn)

**Product name:** Rabbit anti-GPR153 Antibody

**Catalog:** DL91915A

**Synonyms:** PGR1; Probable G-protein coupled receptor 153;  
G-protein coupled receptor PGR1

**Immunogen:** KLH-conjugated synthetic peptide encompassing a  
sequence within the center region of human  
GPR153. The exact sequence is proprietary.

**Form:** Liquid

**Concentration:** 1mg/mL

**Size:** 100 ul/50 ul

**Host:** Rabbit

**Reactivity:** Human, Mouse, Rat

**Application:** WB

**Clonality:** Polyclonal

**Dilution:** WB (1/500 - 1/1000)

**Entrez Gene:** 387509/100129

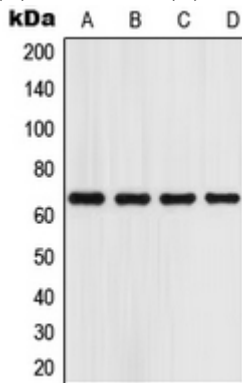
**SwissProt:** Q6NV75/Q8K0Z9

**Purification:** The antibody was purified by immunogen affinity chromatography.

**Buffer:** Liquid in 0.42% Potassium phosphate, 0.87% Sodium chloride, pH 7.3, 30% glycerol, and 0.01% sodium azide.

### WB description:

Western blot analysis of GPR153 expression in A549 (A), HeLa (B), Raw264.7 (C), rat lung (D) whole cell lysates.



**Storage:**



Store at -20°C. Avoid repeated freeze / thaw cycles.