

Manufacturer/Supplier:

WUXI DONGLIN SCI&TECH DEVELOPMENT CO., LTD

Address: A1-203 Mingpin CityII, No.8 Xihudong Road, Liangxi District
Wuxi Jiangsu Province, China

TELE: 86-510-82732223

FAX: 86-510-82720101-8014

Web : www.dldevelop.com

Email: info@dldevelop.com.cn service@dldevelop.com.cn

Product name: Rabbit anti-Kappa-actin Antibody

Catalog: DL91909A

Synonyms: Beta-actin-like protein 2; Kappa-actin

Immunogen: KLH-conjugated synthetic peptide encompassing a sequence within the center region of human Kappa-actin. The exact sequence is proprietary.

Form: Liquid

Concentration: 1mg/mL

Size: 100 ul/50 ul

Host: Rabbit

Reactivity:
Human, Mouse, Rat, Monkey

Application: WB, IP

Clonality: Polyclonal

Dilution: WB (1/500 - 1/1000), IP

(1/10 - 1/100)

Entrez Gene: 345651/238880

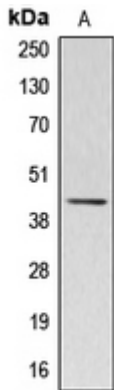
SwissProt: Q562R1/Q8BFZ3

Purification: The antibody was purified by immunogen affinity chromatography.

Buffer: Liquid in 0.42% Potassium phosphate, 0.87% Sodium chloride, pH 7.3, 30% glycerol, and 0.01% sodium azide.

WB description:

Western blot analysis of Kappa-actin expression in HuvEc (A) whole cell lysates.



IP description:

Storage:

Store at -20°C. Avoid repeated freeze / thaw cycles.