

Manufacturer/Supplier:

WUXI DONGLIN SCI&TECH DEVELOPMENT CO., LTD

Address: A1-203 Mingpin CityII, No.8 Xihudong Road, Liangxi District
Wuxi Jiangsu Province, China

TELE: 86-510-82732223

FAX: 86-510-82720101-8014

Web : www.dldevelop.com

Email: info@dldevelop.com.cn service@dldevelop.com.cn

Product name: Rabbit anti-CT47 Antibody

Catalog: DL91895A

Synonyms: CT47.1; CT47.2; CT47.3; CT47.4; CT47.5; CT47.6;
CT47.7; CT47.8; CT47.9; CT47.10; CT47.11;
CT47.12; Cancer/testis antigen 47A; Cancer/testis
antigen 47; CT47

Immunogen: KLH-conjugated synthetic peptide encompassing a
sequence within the C-term region of human CT47.
The exact sequence is proprietary.

Form: Liquid

Concentration: 1mg/mL

Size: 100 ul/50 ul

Host: Rabbit

Reactivity:

Application: WB

Human,Mouse,Rat,Monkey

Clonality: Polyclonal

Dilution: WB (1/500 - 1/1000)

Entrez Gene:

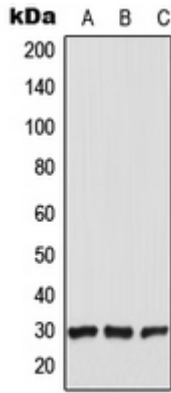
SwissProt: Q5JQC4

Purification: The antibody was purified by immunogen affinity chromatography.

Buffer: Liquid in 0.42% Potassium phosphate, 0.87% Sodium chloride, pH 7.3, 30% glycerol, and 0.01% sodium azide.

WB description:

Western blot analysis of CT47 expression in HEK293T (A), Raw264.7 (B), PC12 (C) whole cell lysates.



Storage:

Store at -20°C. Avoid repeated freeze / thaw cycles.