

Manufacturer/Supplier:

WUXI DONGLIN SCI&TECH DEVELOPMENT CO., LTD

Address: A1-203 Mingpin CityII, No.8 Xihudong Road, Liangxi District
Wuxi Jiangsu Province, China

TELE: 86-510-82732223

FAX: 86-510-82720101-8014

Web : www.dldevelop.com

Email: info@dldevelop.com.cn service@dldevelop.com.cn

Product name: Rabbit anti-MCT13 Antibody

Catalog: DL91891A

Synonyms: MCT13; Monocarboxylate transporter 13; MCT 13;
Solute carrier family 16 member 13

Immunogen: KLH-conjugated synthetic peptide encompassing a
sequence within the C-term region of human
MCT13. The exact sequence is proprietary.

Form: Liquid

Concentration: 1mg/mL

Size: 100 ul/50 ul

Host: Rabbit

Reactivity: Human, Mouse, Rat

Application: WB

Clonality: Polyclonal

Dilution: WB (1/500 - 1/1000)

Entrez Gene: 201232/69309/287451

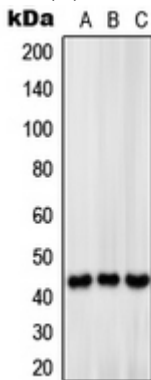
SwissProt: Q7RTY0/Q8CE94/Q66HE2

Purification: The antibody was purified by immunogen affinity chromatography.

Buffer: Liquid in 0.42% Potassium phosphate, 0.87% Sodium chloride, pH 7.3, 30% glycerol, and 0.01% sodium azide.

WB description:

Western blot analysis of MCT13 expression in HeLa (A), mouse liver (B), rat liver (C) whole cell lysates.



Storage:



Store at -20°C. Avoid repeated freeze / thaw cycles.