

**Manufacturer/Supplier:**

WUXI DONGLIN SCI&TECH DEVELOPMENT CO., LTD

**Address:** A1-203 Mingpin CityII, No.8 Xihudong Road. Liangxi District  
Wuxi Jiangsu Province, China

TELE: 86-510-82732223

FAX: 86-510-82720101-8014

**Web :** [www.dldevelop.com](http://www.dldevelop.com)

Email: [info@dldevelop.com.cn](mailto:info@dldevelop.com.cn)    [service@dldevelop.com.cn](mailto:service@dldevelop.com.cn)

**Product name:** Rabbit anti-CLEC14A Antibody

**Catalog:** DL91882A

**Synonyms:** C14orf27; EGFR5; C-type lectin domain family 14 member A; Epidermal growth factor receptor 5; EGFR-5

**Immunogen:** KLH-conjugated synthetic peptide encompassing a sequence within the center region of human CLEC14A. The exact sequence is proprietary.

**Form:** Liquid

**Concentration:** 1mg/mL

**Size:** 100 ul/50 ul

**Host:** Rabbit

**Reactivity:** Human, Mouse, Rat

**Application:** WB

**Clonality:** Polyclonal

**Dilution:** WB (1/500 - 1/1000)

**Entrez Gene:** 161198/66864

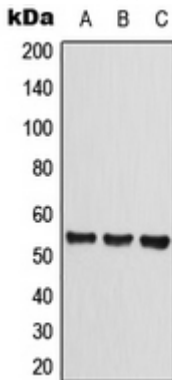
**SwissProt:** Q86T13/Q8VCP9

**Purification:** The antibody was purified by immunogen affinity chromatography.

**Buffer:** Liquid in 0.42% Potassium phosphate, 0.87% Sodium chloride, pH 7.3, 30% glycerol, and 0.01% sodium azide.

**WB description:**

Western blot analysis of CLEC14A expression in HEK293T (A), Raw264.7 (B), rat liver (C) whole cell lysates.



**Storage:**

Store at -20°C. Avoid repeated freeze / thaw cycles.