

Manufacturer/Supplier:

WUXI DONGLIN SCI&TECH DEVELOPMENT CO., LTD

Address: A1-203 Mingpin CityII, No.8 Xihudong Road, Liangxi District
Wuxi Jiangsu Province, China

TELE: 86-510-82732223

FAX: 86-510-82720101-8014

Web : www.dldevelop.com

Email: info@dldevelop.com.cn service@dldevelop.com.cn

Product name: Rabbit anti-IL-22RA2 Antibody

Catalog: DL91845A

Synonyms: Interleukin-22 receptor subunit alpha-2; IL-22 receptor subunit alpha-2; IL-22R-alpha-2; IL-22RA2; Cytokine receptor class-II member 10; Cytokine receptor family 2 member 10; CRF2-10; Cytokine receptor family type 2, soluble 1; CRF2-S1; Interleukin-22-bin

Immunogen: KLH-conjugated synthetic peptide encompassing a sequence within the center region of human IL-22RA2. The exact sequence is proprietary.

Form: Liquid

Concentration: 1mg/mL

Size: 100 ul/50 ul

Host: Rabbit

Reactivity: Human, Mouse, Rat **Application:** WB

Clonality: Polyclonal **Dilution:** WB (1/500 - 1/1000)

Entrez Gene: 116379/237310/444986

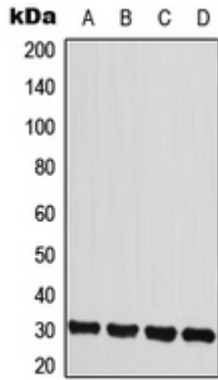
SwissProt: Q969J5/Q80XF5/Q7TNI4

Purification: The antibody was purified by immunogen affinity chromatography.

Buffer: Liquid in 0.42% Potassium phosphate, 0.87% Sodium chloride, pH 7.3, 30% glycerol, and 0.01% sodium azide.

WB description:

Western blot analysis of IL-22RA2 expression in HeLa (A), MCF7 (B), mouse heart (C), rat heart (D) whole cell lysates.



Storage:

Store at -20°C. Avoid repeated freeze / thaw cycles.